

PSYC 223: Drugs & Behavior

Fall 2020 | Synchronous Online

Synchronous Sessions (by section): Monday (I) & Wednesday (II) 1:00 – 2:15PM EST

Course Description

The topics this course will cover includes (1) the mechanism of effects and actions of psychoactive drugs, (2) how a drug can become a substance of abuse for some, but not others, and (3) the factors that determine addiction liability and treatment.

My goals are for you to:

(1) Leave having realized that, now and in the future, biological and social factors determine the efficacy and misuse of drugs:

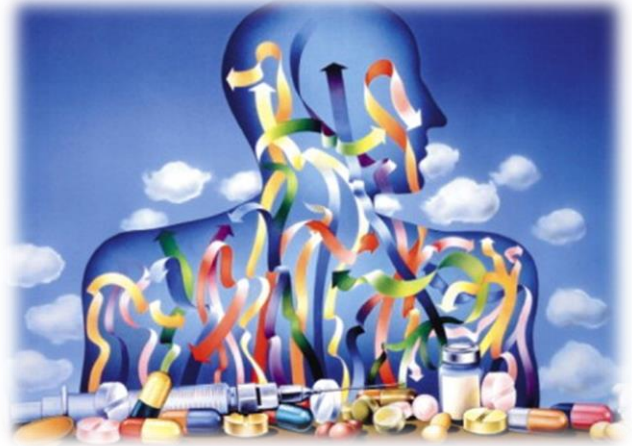
- 1) The pharmaceutical industry produces drugs as a solution to behavioral and physiological maladies informed by several lines of evidence to determine optimal efficacy.
- 2) The approval and legalization of drugs has a bitter history – with many arguments for and against different substances.
- 3) Addiction is a biological and social construct, which complicates how we recognize and treat individuals with a substance problem.

(2) Leave being able to transfer your understanding to concretely address current and future situations involving a psychoactive drug that you, a friend, or loved one may encounter in the future.

Learning Objectives

Students who complete this course will be able to:

- Understand the mechanisms of drug action
- Provide a description of the neuronal structures/pathways affected by the short- and long-term exposure to drugs.
- Describe the epidemiology and risk/protective mechanisms of common drugs of abuse
- Compare/Contrast the mechanism of action and effects of various drugs: alcohol, tobacco/nicotine, marijuana, stimulants, and opiates.
- Recognize the clinical criteria for substance use disorders
- Understand and evaluate the role of nature and nurture in substance addiction and comorbid psychopathology/traits
- Provide a clear, respectful, and well-thought out argument about the scientific community's current understanding of how we diagnose and treat substance use disorders.
- Identify preventative and intervention strategies for drug abuse



Course Instructor



Professor Rohan Palmer, PhD
Office: PAIS 379, Tel: 404-727-7340
Email: Rohan.Palmer@Emory.edu

Office hours: Fridays 9:00 – 11:00 AM. I am also able to meet by appointment.

Please feel free to contact me anytime via email with questions related to the course or your shared interest in the behavioral effects of drugs and drug-related harm. I will endeavor to respond within 48 hours.

Given the COVID-19 social distancing restrictions, all office hours will be via Zoom. See course materials on the proceeding pages for the Zoom meeting link and password for your course section.

Graduate Student TAs

Section I (Mondays)

Mr. Ryan Guest

Email: RMGuest@emory.edu

Office Hours: Th 3:30-5:30 PM EDT



Section II (Wednesdays)

Ms. Lauren Bertin

Email: LBertin@emory.edu

Office Hours: Mon 3:30-5:30 PM EDT



Course Materials

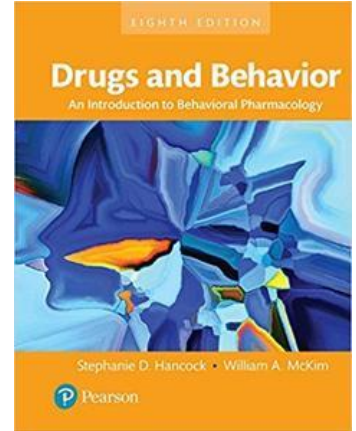
Mandatory Synchronous Class Sessions

Each class section will meet with Professor Palmer on either Monday or Wednesday via Zoom.

- Section I meets on Mondays from 1:00 – 2:15 PM EDT
- Section II meets on Wednesdays from 1:00 – 2:15 PM EDT

Textbook

- The **required** textbook for this course is: Drugs and Behavior: An Introduction to Behavioral Pharmacology, Books a la Carte, 8th Edition, by Hancock & McKim. Access the bookstore digital and print copy [here](#).
- It is your responsibility to review the sections of each chapter that are covered during class and/or assigned as directed reading for an asynchronous assignment.



Technology

- This course uses synchronous meetings via Zoom and delivery of asynchronous content delivered via Canvas. Click here for a [PDF](#) of the Emory College Online technology requirements.
- Zoom meetings are not recorded for privacy.
- Lecture slides will be made available to all students via Canvas.



The Canvas Learning Management System

- This course will use a Canvas site (FA20_PSYC_223_2) for communication and posting of course materials (e.g. documents, exams, assignments, lecture slides, supplemental readings, etc.). It is your responsibility to check this site regularly to stay up-to-date on announcements and assignments.
- Canvas requires the computer specifications found here: <https://guides.instructure.com/m/67952/1/720328>.
- Canvas Resources for Students can be found here: <http://canvas-support.emory.edu/canvas-resources/for-students.html>.



CANVAS

Office Hours Tools

- Office hours will be held on Fridays using the online tool Zoom. See links:
 - [Section I](#) (3:30-4:30 PM; Password: 733454)
 - [Section II](#) (5:00-6:00 PM; Password: 645973)



Library Resources & Online Videos

- This course will refer to scientific publications that can be accessed on the internet. Emory University Libraries provides access to all databases online: <https://libraries.emory.edu/materials/articles.html>.
- A [guide](#) to library research tools is online.
- This course will also use videos that are shown in-class. Some videos will be available on the internet via YouTube.



Course Structure

This course is setup in three modules. Each module will cover a set of topics with one topic each week.



Module 1: The Neuropharmacology of Drug Action (8/19 thru 9/21)

This module will introduce concepts related to the pharmacology of drug action, such as pharmacodynamic and -kinetic effects of drugs. Upon completion of module 1, you will be able to describe the pharmacology drug action, brain structures affected by drugs, and factors that influence the efficacy of drug action.

Module 2: Common Substances of Abuse (9/23 thru 11/9)

This module focuses on the action of common substances of abuse at the level of the neuron and neuronal system, as well as how misuse of these substances rises to the level of substance use disorders. Upon completing this module, you will be able to define and describe what it means to have an addiction to a substance, describe the mechanism of action of common substances of abuse (alcohol, tobacco, cannabis, cocaine, and opioids), list the neurotransmitters and receptors affected by substances of abuse.

Module 3: Contexts that Inform Addiction Liability, Treatment, and Prevention (11/18 thru 11/27)

This module builds upon module 2 by covering important caveats in the epidemiology of drug use addiction that are captured by comprehensive theories that encompass biological and environmental mechanisms of substance use. These include, comorbid substance misuse, comorbid brain diseases, such as depression and ADHD, and strategies for prevention and intervention.

Weekly Class Flow

Day 1 - Attend Mandatory Synchronous Class Session

Section I (Mondays @ 1:00 - 2:15 PM)

Section II (Wednesdays @ 1:00 - 2:15 PM)



Day 3 - Start Asynchronous Assignment Using Course Resources

Section I (Wednesdays)

Section II (Fridays)



Day 7 - Submit Asynchronous Assignments Online using Canvas

Section I (Sundays @ 11:59 PM)

Section II (Tuesdays @ 11:59 PM)


Grading Policy

Grading Criteria (based on activities below; 1 point = 1%)*

Attendance	14 points
Asynchronous Activity	36 points
Exam 1	25 points
<u>Exam 2</u>	<u>25 points</u>
Total	100 points

93 and above	A
90 to 92.99	A-
87 to 89.99	B+
83 to 86.99	B
80 to 82.99	B-
77 to 79.99	C+
73 to 76.99	C
70 to 72.99	C-
67 to 69.99	D+
60 to 66.99	D
0 to 59.99	F

***Earn percentage points by completing each course activity.**

***Earned point total at the end of the semester is equal to your course grade** 

Attendance

Attendance at assigned synchronous sessions is mandatory – you will be marked absent if you attend a course section that you are not assigned to. Students are expected to be active learners and participants.

Evidence of this includes:

- Attending and being on-time for all synchronous sessions. Please see the Absence Policy for more details on how this affects grading.
- **Students are required to be visually present during Zoom meetings.**
 - The camera on your device should be turned on. Your mic will be muted. A raised hand should be used to indicate you have a question/comment relevant to the material being presented.
 - Your zoom name should match your real name. This will allow TAs to confirm your attendance for the duration of each lecture.
- Being engaged by asking questions and contributing to class discussions. Students will be able to submit anonymous questions during each class session. The link will be provided at the start of class.
- Participating in synchronous and asynchronous class activities, such as in-class Kahoot questions.

Asynchronous Activities

- Asynchronous activities includes answering specific questions after reviewing the assigned chapters, as well as finding/reading/analyzing scientific literature, etc. Assignments must be written in your own words. Submitted assignments must have a Canvas plagiarism/“similarity score” < 25%. See [here](#) for info.
- Assignments must be completed and submitted, per instructions, by the due date indicated at the time of distribution. Assignments cannot be made up at a later time.
- Exceptions to this policy will require explicit permission of the instructor in writing, prior to the due date.

Synchronous Exams

- **Exams will occur in Canvas using the Respondus Lockdown Browser. Students must install and maintain updates of the browser on their computer. Details are provided on how to install it [here](#).**
- There are two synchronous/in-class exams. Questions may include but are not limited to multiple choice, true/false, matching, and fill-in-the-blank. It is your responsibility to review lecture slides and other course material from the module in preparation for each exam. Review session participation is recommended.
- Exams are timed and closed-book.
- Exams must be completed during the assigned timeframe (45 minutes; exceptions to this policy will require explicit permission of the instructor *in writing, prior to the exam date*). Students with confirmed OAS accommodations must take exams with the whole class and will remain in Zoom during extended time.

Course Policies & Procedures

Social Distancing

- The topics in this class are interesting to many students. Group studying is encouraged so long as students use their own words when completing assignments.
- Students should adhere to the university requirements for the continuous wearing of masks while on the college campus if engaged in group activities. In addition:
 - Your mask should be worn at all times while on campus (except in your private quarters).
 - You do not have to wear a mask during zoom sessions.
 - Students should refer to the university COVID-19 updates [webpage](#) and their return to campus information packet for safety information and policies that help to ensure all of our safety.

Written Communication with the Instructor

- I will respond to written communications within 48 business hours.
- Use email as the primary mode for communication, especially if your email will contain personal information, such as grades, attendance, illness, etc.
- As a general rule, email communications with instructors should be conducted in a professional manner. An email and all subsequent replies should include appropriate salutation and valediction statements and your signature. The body must not always be formal, but it should be written in a respectful tone (i.e. If you would hesitate to say something to someone's face, do not write it in an e-mail.). Strive for clarity; after reading the email once, the recipient should be able to understand the purpose and context of the email and your expected or desired response. Also strive for brevity; lengthy questions and/or explanations are more appropriate for a synchronous online meeting. The email should contain correct grammar and punctuation, and it should not contain terms or abbreviations that are adapted specifically for text messaging or social media.

Grading Policy (+ Extra Credit Opportunity)

- Earned points at the end of the semester are used to determine each student's grade.
- A grade of "S" for this course requires a C- or better (i.e., 70+ points).
- Final Grade Enhancement Opportunity – My way of curving this class is via extra credit opportunities. All students have the option to earn 6 additional points at the end of the semester by completing the optional "extra credit assignment" that will be released over Thanksgiving Break. This will be an asynchronous activity that requires you to answer several questions using the knowledge you gain over the course of the semester.
- Appeals to final grade decisions should be submitted (in writing) to the Director of Undergraduate Studies in Psychology.

Asynchronous Assignment Policy

- All assignments are due no later than the date assigned by the instructor
- Assignments should not contain any personable identifying information (e.g., Name or Student ID).
- Each assignment is worth 3 points (see the grading rubric on page 10 for details).
- Canvas will not allow late assignments to be submitted.
 - Assignments should be submitted well in advance of the 11:59 PM deadline.
 - One point will be deducted from for each 24-hour period that the assignment is late;
 - Late assignments should be emailed to the assigned TA for your section. Exceptions to this policy will require explicit permission of the instructor in writing, prior to the due date.
- Questions about assignments should be emailed to the TA assigned to your course section.

Absence Policy

- A grade deduction of one point (aka one percentage points [-1%]) will be assessed for every unexcused synchronous session absence. You earn 1% point each week during the semester that you show up and participate in class. For example if you earned all of the available points on exams and assignments (86 points total [i.e., 25+25+36]), but had four absences, your final attendance point total would be 10 points and your grade after Thanksgiving would be 86+10 = 96 points or 96%. *However (see the next bullet)....*
- Missing 25% or more of class meetings (i.e., 4 classes+) will result in automatic failure (F) of the course. Therefore, students absent from four (4) or more synchronous sessions without approval will automatically receive a grade of “F” for the course.
- You will be marked absent if you miss greater than or equal to one-third of the synchronous class period.
 - Arriving to the session late by 30 minutes, leaving 30 minutes before session dismissal, or any combination of late arrival/early departure that amounts to 30 minutes of missed class will result in an absence.
 - Arrivals or departures less than 30 minutes late/early will be considered in your participation grade.
- Absences include missing class for reasons such as travel, appointments, interviews, conferences, illness, injury, or simply not showing up. Students should contact OUE for support in requesting an excused absence from class.
- Religious observances and school business will be considered for excused absences; however, you *must* discuss these individually with the instructor prior to the absence.
- Certain situations may qualify as excused absences. In serious events such as major illness, bereavement, or situations in which you are working with University officials to resolve ongoing circumstances beyond your control, contact OUE for support in requesting an excused absence from class.
- *After any absence, it is your responsibility to find out what material, assignments, or announcements were missed. All course slides are available in Canvas.*

Absences from Examinations

A student who fails to take any required examination at the scheduled time may not make up the examination without written permission from a dean in the Office for Undergraduate Education.

Permission will be granted only for serious illness or other compelling reasons, such as participation in scheduled events off-campus as an official representative of the University.

Technology Policy

- Silence your cellular phones before joining the synchronous sessions.
- Communicate to others that you are in a live meeting. Zoom offers virtual backgrounds. See details [here](#).

Academic Honesty Policy

The responsibility for maintaining a standard of unimpeachable honor in all academic work falls upon every individual who is a part of Emory University. The Honor Code of Emory College is based on the fundamental assumption that every loyal person of the University not only will conduct his or her own life according to the dictates of the highest honor, but will also refuse to tolerate in others action which would sully the good name of the institution.

Academic misconduct is an offense generally defined as any action or inaction which is offensive to the integrity and honesty of the members of the academic community. Every student who chooses to attend Emory College agrees, as a condition of attendance, to abide by all provisions of the Honor Code as long as he

or she remains a student in the college. By continued attendance in Emory College, students reaffirm their pledge to adhere to and uphold the provisions of the Honor Code.

Access and Disability Resources

Special accommodations can be made for students with a documented disability or medical condition, provided that they inform Professor Palmer and register with the [Office of Accessibility Services](#). It is recommended that students who qualify for accommodations register, even if not currently desiring these accommodations. Office of Accessibility Services (OAS) works with students who have disabilities to provide reasonable accommodations. In order to receive consideration for reasonable accommodations, you must contact OAS. It is the responsibility of the student to register with OAS. Please note that accommodations are not retroactive and that disability accommodations are not provided until an accommodation letter has been processed. Students must renew their accommodation letter every semester they attend classes.

Students registered with OAS who have a letter outlining their academic accommodations should coordinate a meeting time with me as early in the semester as possible to discuss a protocol to implement the accommodations as needed throughout the semester. Contact OAS for more information at (404) 727-9877 or accessibility@emory.edu. Additional information is available at the [OAS website](#).

Additionally, students with unexpected health or medical concerns should immediately contact their dean and OAS to ensure any accommodations needed for these events, including class absences. Emory University complies with the regulations of the [Americans with Disabilities Act](#) of 1990 and offers accommodations to students with disabilities. If you are in need of a classroom accommodation, please make an appointment with me to discuss this as soon as possible. All information will be held in the strictest confidence.

Asynchronous Assignment Grading Rubric

Weekly Asynchronous Activity

- **There are 12 weekly assignments.** Students will review the supportive materials and answer the question(s).
 - Assignments are graded blindly so do not include any identifying information (name or student ID) when submitting it to Canvas.
 - If your response is to a series of questions then write the question number and then provide the answer using a few sentences.
 - If the question calls for a 1-page essay to be written, then it must meet the following criteria: 3-body paragraph (Restatement of question with correct answer, Supporting evidence, Conclusion).
 - If the question calls for another form of submission (e.g., video response) then please adhere to the guidelines stipulated in the assignment.
- **Each assignment will be worth three points that are earned based on the following rubric.**
 - Assignments are graded based on the appropriate use of course content via Organization, Elaboration, and Use of Language.
 - Here is a breakdown of how points will be assigned based on the table below:
 - A score of 3 is the gold standard and requires all underlined criteria to be met (TRUE).
 - A score of 2 is earned if any one of the underlined criteria is TRUE.
 - A score of 1 is earned if two or more of the underlined criteria is TRUE.
 - A score of 0 is earned if no assignment is submitted OR the student submits the assignment three days late.
 - *Note: Students may also lose points for each 24-hour period their assignment is submitted late.*

PSYCH 223 Assignment grading rubric				
	Score 3	Score 2	Score 1	Score 0
Organization	<u>Uses clear, organizational strategy to present the correct answer(s) in their entirety.</u> <u>Personal identifier removed from assignment.</u>	<u>Uses clear organizational strategy to present the correct answer(s), but the answer is only partially correct.</u> <u>Personal identifier included in assignment</u>	<u>Uses inconsistent organizational strategy or the correct answer is not present.</u> <u>Personal identifier included in assignment</u>	<u>Missing assignment</u>
Elaboration	<u>Provides specific, well elaborated support for the provided answer (citing examples from the text or other sources)</u>	<u>Provides limited support for the answer (an example from the text or other source is provided by improperly cited)</u>	<u>No support for the provided answer.</u>	<u>Missing assignment</u>
Use of Language	<u>Proper use of English language.</u> No punctuation, grammar, or spelling errors.	<u>Good use of English language.</u> 1-2 punctuation, grammar, or spelling errors	<u>Poor use of English language.</u> Multiple (3+) punctuation, grammar, or spelling errors	<u>Missing assignment</u>

Course Schedule (Fall 2020) for Sections I and II

Module	Important Dates		Synchronous Lecture Topic	Textbook Reading	Assignment Due Dates	
	Section I (M)	Section II (W)			Section I (M)	Section II (W)
1	24-Aug	19-Aug	Course Intro; Intro to Pharmacology	Chapter 1	30-Aug	25-Aug
	31-Aug	26-Aug	Behavior Analysis of Drug Effects	Chapter 2	6-Sep	1-Sep
	7-Sep	2-Sep	Neurotransmission & Brain Effects of Drugs	Chapter 4	13-Sep	8-Sep
	14-Sep	9-Sep	Adapting to Drugs (Tolerance, Sensitization, Expectation)	Chapter 3	20-Sep	15-Sep
	TBD	TBD	Exam 1 Review Session over Zoom	-	-	-
	21-Sep	16-Sep	Exam 1	Module 1 material		
2	28-Sep	23-Sep	Drug Addiction	Chapter 5	4-Oct	29-Sep
	5-Oct	30-Sep	"Addiction" Review & Discussion	Film Review	11-Oct	6-Oct
	12-Oct	7-Oct	Alcohol & Alcoholism	Chapter 6	18-Oct	13-Oct
	19-Oct	14-Oct	"Risky Drinking" Review & Discussion	Film Review	25-Oct	20-Oct
	26-Oct	21-Oct	Tobacco & Nicotine Addiction	Chapter 8	1-Nov	27-Oct
	2-Nov	28-Oct	Cannabis	Chapter 14	8-Nov	3-Nov
	TBD	TBD	Exam 2 Review Session over Zoom	-	-	-
9-Nov	4-Nov	Exam 2	Module 2 material			
3	16-Nov	11-Nov	Theories of Prevention & Case Study	Assigned Papers	22-Nov	17-Nov
	23-Nov	18-Nov	Principles of Addiction Treatment	Chapters 5, 11	29-Nov	24-Nov
	27-Nov	27-Nov	Optional Extra Credit Assignment	Integrative	6-Dec	6-Dec