

## Does Perturbation-Based Balance Training Prevent Falls? Systematic Review and Meta-Analysis of Preliminary Randomized Controlled Trials

Avril Mansfield, Jennifer S. Wong, Jessica Bryce, Svetlana Knorr, Kara K. Patterson

A. Mansfield, PhD, Toronto Rehabilitation Institute, University Health Network, 550 University Ave, Room 11-117, Toronto, Ontario, Canada M5G 2A2; Brain Sciences Program, Sunnybrook Research Institute, Toronto, Ontario, Canada; and Department of Physical Therapy and Graduate Department of Rehabilitation Sciences, University of Toronto, Toronto, Ontario, Canada. Address all correspondence to Dr Mansfield at: [avril.mansfield@uhn.ca](mailto:avril.mansfield@uhn.ca).

J.S. Wong, BSc, Toronto Rehabilitation Institute, University Health Network, and Graduate Department of Rehabilitation Sciences, University of Toronto.

J. Bryce, BSc, Toronto Rehabilitation Institute, University Health Network.

S. Knorr, PhD, Toronto Rehabilitation Institute, University Health Network.

K.K. Patterson, PhD, Toronto Rehabilitation Institute, University Health Network; Department of Physical Therapy and Graduate Department of Rehabilitation Sciences, University of Toronto; and School of Physical Therapy, Faculty of Health Sciences, Western University, London, Ontario, Canada.

[Mansfield A, Wong JS, Bryce J, et al. Does perturbation-based balance training prevent falls? Systematic review and meta-analysis of preliminary randomized controlled trials. *Phys Ther*. 2015;95:700-709.]

© 2015 American Physical Therapy Association

Published Ahead of Print:  
December 18, 2014

Accepted: November 26, 2014  
Submitted: March 9, 2014

**Background.** Older adults and individuals with neurological conditions are at an increased risk for falls. Although physical exercise can prevent falls, certain types of exercise may be more effective. Perturbation-based balance training is a novel intervention involving repeated postural perturbations aiming to improve control of rapid balance reactions.

**Purpose.** The purpose of this study was to estimate the effect of perturbation-based balance training on falls in daily life.

**Data Sources.** MEDLINE (1946-July 2014), EMBASE (1974-July 2014), PEDro (all dates), CENTRAL (1991-July 2014), and Google Scholar (all dates) were the data sources used in this study.

**Study Selection.** Randomized controlled trials written in English were included if they focused on perturbation-based balance training among older adults or individuals with neurological conditions and collected falls data posttraining.

**Data Extraction.** Two investigators extracted data independently. Study authors were contacted to obtain missing information. A PEDro score was obtained for each study. Primary outcomes were proportion of participants who reported one or more falls (ie, number of “fallers”) and the total number of falls. The risk ratio (proportion of fallers) and rate ratio (number of falls) were entered into the analysis.

**Data Synthesis.** Eight studies involving 404 participants were included. Participants who completed perturbation-based balance training were less likely to report a fall (overall risk ratio=0.71; 95% confidence interval=0.52, 0.96;  $P=.02$ ) and reported fewer falls than those in the control groups (overall rate ratio=0.54; 95% confidence interval=0.34, 0.85;  $P=.007$ ).

**Limitations.** Study authors do not always identify that they have included perturbation training in their intervention; therefore, it is possible that some appropriate studies were not included. Study designs were heterogeneous, preventing subanalyses.

**Conclusions.** Perturbation-based balance training appears to reduce fall risk among older adults and individuals with Parkinson disease.



Post a Rapid Response to  
this article at:  
[ptjournal.apta.org](http://ptjournal.apta.org)

Physiological impairments associated with neurological conditions (eg, stroke, Parkinson disease) and the “normal” aging process can contribute to impaired balance control and increased fall risk. Falls can have direct negative consequences (ie, injuries) but also can result in fear and anxiety, reduced independent mobility, and increased risk of admission to long-term care facilities. Previous work has generally shown that physical exercise focused on balance training can prevent falls<sup>1-5</sup>; however, there is limited or no evidence for reduced falls following balance training in some cases (eg, for people with stroke<sup>6,7</sup>). It is possible that more specific exercise, focused on the mechanism of occurrence of falls, might be more effective for falls prevention.

Although many factors contribute to increased risk for falls, a specific fall event ultimately occurs when an individual fails to recover from a loss of balance or postural perturbation.<sup>8</sup> Postural perturbations can occur in daily life for a variety of reasons, including failure to control weight shifting during voluntary movement or experiencing a slip or trip while walking.<sup>9</sup> Balance recovery reactions, such as swaying around the ankles or hips, taking a step, or grasping a handhold,<sup>10</sup> are executed rapidly to prevent a fall following a postural perturbation. Individuals with impaired balance control and increased fall risk often show difficulty controlling these balance recovery reactions.<sup>11-13</sup> Because all ambulatory individuals are at risk for experiencing a loss of balance during daily life, training to improve control of balance recovery reactions may be an effective means of preventing falls.<sup>14-16</sup> Perturbation-based balance training (PBT) is a novel balance training intervention that incorporates exposure to repeated postural perturbations to evoke rapid balance reactions, enabling the individual to

improve control of these reactions with practice. The alternative—training voluntary movements (eg, volitionally executed stepping or reach-to-grasp movements)—will likely not lead to improved reactive balance control due to the additional speed and stability requirements of balance reactions.<sup>15</sup>

Studies have shown that PBT can improve speed and control of voluntary movements<sup>17</sup> and rapid balance reactions<sup>18-20</sup> and can reduce occurrence of “falls” (into a safety harness) following controlled postural perturbations in the laboratory.<sup>18,20,21</sup> However, the effect of PBT on risk of falls during daily life has not been conclusively demonstrated. Several studies with small sample sizes have shown nonsignificant reductions in fall rates in the trained group compared with a control group.<sup>22,23</sup> Therefore, the purpose of this study was to estimate the effect of PBT on risk of falls in daily life among individuals at increased risk for falls (ie, older adults and individuals with neurological conditions) by conducting a comprehensive search for, and meta-analysis of, published and unpublished data from randomized controlled trials of PBT.

## Method

### Design Overview

This study involved systematic review and meta-analysis, conducted according to Cochrane guidelines<sup>24</sup> and reported according to the PRISMA statement and checklist.<sup>25</sup>

### Data Sources and Searches

The search strategy and inclusion and exclusion criteria for selected studies were determined a priori by the investigators in collaboration with an information specialist. Terminology around PBT is inconsistent in the literature. Some investigators refer to “perturbation training,” whereas others use terms such as “agility training” or “dynamic bal-

ance training.” Additionally, there are no relevant subject headings within literature databases to accurately encompass the content of PBT. Thus, a multistage and iterative search strategy was used to identify studies for inclusion in the review:

1. An initial search of MEDLINE (1946–current), EMBASE (1974–current), PEDro (all available dates), and CENTRAL (1991–current) databases was conducted in July 2014. The database searches were conducted by the information specialist. An example of the MEDLINE search strategy is provided in the Appendix; the search terms were modified, as required, for other databases.
2. Relevant review articles and studies that focused on PBT were identified based on either the abstract or full text of the article.
3. The reference lists of articles identified in step 2 were searched to find additional studies that might have focused on PBT.
4. Steps 2 and 3 were repeated until no new studies were identified.
5. Titles, abstracts, and full papers of all identified studies were reviewed to determine if they met the inclusion criteria (see below). If a study met all but the last criterion (ie, no falls were reported in the paper), the authors were contacted to determine if falls data existed. If such data were available, the study was included in the analysis.
6. A cited reference search was completed using Google Scholar (all available dates) for all studies selected in step 5 to identify any studies that cited relevant articles. This “snowball” sampling approach has been used in other systematic reviews (eg, Fegran

et al,<sup>26</sup> Groene et al,<sup>27</sup> Sweeney et al<sup>28</sup>).

- Steps 2 through 6 were repeated until no new studies were identified.

Bibliographic management was facilitated using Endnote (version X5, Thomson Reuters, Philadelphia, Pennsylvania).

### Study Selection

All authors were involved in the search and review process. Each abstract was reviewed by at least 2 authors independently. Disagreements regarding study inclusion were resolved by discussion. The analysis included studies published in English that met the following criteria: (1) focused on PBT (see definition below), (2) included older adults ( $\geq 60$  years old) or individuals with neurological conditions, (3) included a control group that did not do any perturbation training over the course of the study (ie, crossover designs were excluded), (4) randomly allocated participants to groups, and (5) collected data on falls experienced in daily life. In this study, *perturbation-based balance training* was defined as the intentional application of repeated postural perturbations that cause a loss of balance over the course of a training program with the goal of improving whole-body reactive balance control. Thus, we excluded studies using postural perturbations for rehabilitation of a single joint. Perturbations may be applied using equipment (eg, moving platform) or manually (eg, nudge from therapist). Although postural perturbations may occur during some challenging balance activities (eg, standing on an unstable surface), such activities also can occur without postural perturbation with adequate feedforward balance control; therefore, studies that solely included these activities were excluded. Additionally, to be consid-

ered “training,” there must be at least 2 sessions; therefore, we excluded studies examining within-session adaptations.

### Data Extraction and Quality Assessment

The following data were extracted from each selected paper: details of the population studied, details of the control and PBT interventions (type of training, frequency and duration of training sessions, duration of the entire training program), sample size, falls monitoring duration, number of participants in each group who reported one or more falls (ie, number of “fallers”), and total number of falls reported by participants in each group. Study authors were contacted to obtain any missing information. Additionally, studies were rated for methodological quality according to the PEDro scale.<sup>29,30</sup> The study received a score of 1 for PEDro items relating to key outcome measure if these items applied to collection and reporting of falls data.

Data extraction and PEDro scoring were performed by 2 authors independently for each selected article. Disagreements between authors regarding data extraction or PEDro scores were resolved by discussion.

### Data Synthesis and Analysis

Extracted data were summarized in a table, and differences and similarities between studies were noted. Meta-analyses were conducted using Review Manager (version 5.2, The Nordic Cochrane Centre, The Cochrane Collaboration). The 2 outcomes of interest were proportion of fallers and fall rate. The generic inverse variance method was used, with the natural logarithm and standard error of the risk ratio (proportion of fallers) and rate ratio (falls rate) entered into the analysis. The  $I^2$  statistic was used to assess statistical heterogeneity<sup>31</sup>; as there was significant heterogeneity ( $I^2 > 30\%$ ), ran-

dom effects models were used.<sup>32</sup> Ninety-five percent confidence intervals (95% CIs) were calculated for the overall effects.

### Role of the Funding Source

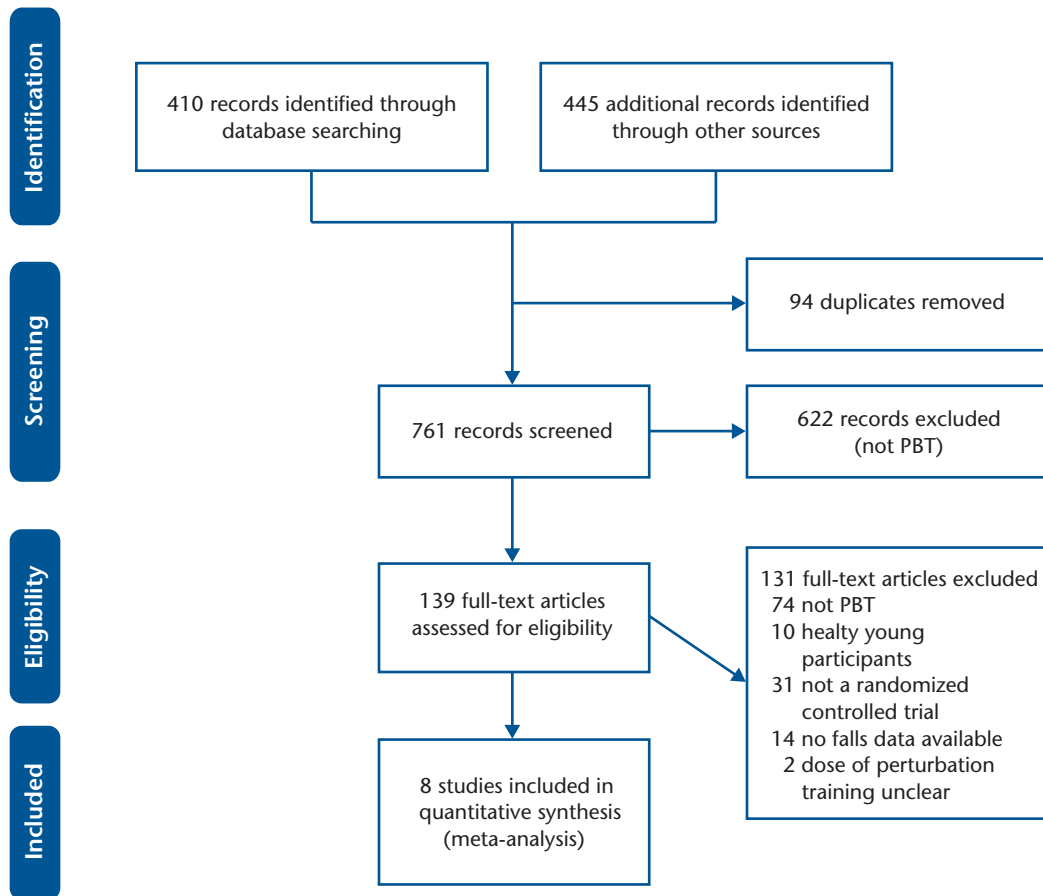
Dr Patterson was supported by a Focus on Stroke personnel award from the Heart and Stroke Foundation and the Canadian Stroke Network.

### Results

We identified 761 potential articles using the search strategy; Figure 1 outlines the search process. Of the articles identified, 7 met all inclusion criteria.<sup>18,22,23,33-36</sup> However, 2 of these studies involved several different types of exercise, and it was not clear that all participants assigned to the PBT group actually received PBT. Thus, these 2 studies<sup>18,36</sup> were excluded from the review. Three studies met all but the last criterion (ie, reported falls experienced in daily life). However, falls data for these studies were available elsewhere; for one of these studies, a subsequent article from the same authors reporting falls data was identified,<sup>37</sup> and for the other 2 studies, falls data were available from the authors.<sup>19,38</sup> Therefore, 8 studies were included in the final analysis. Additional details for one study<sup>19</sup> were obtained from a published protocol.<sup>39</sup> Table 1 summarizes the 8 selected studies.

### Description of Studies

There were 404 participants included in the 8 selected studies (202 completed PBT, and 202 were in the control groups). The selected studies included healthy<sup>19,34,37</sup> and frail<sup>22,38</sup> older adults and individuals with Parkinson disease.<sup>23,33,35</sup> Two studies included frail older adults, which represented a heterogeneous sample of individuals with chronic conditions (eg, stroke, arthritis, cognitive impairment or dementia). Seven studies attempted to target



**Figure 1.** Summary of search strategy. The initial database search yielded 410 abstracts. A further 445 studies were considered for inclusion through “snowball” sampling (as described in the text). The majority of studies were excluded because they did not focus on perturbation-based balance training (PBT). Eight studies were selected and included in the final analysis.

individuals at increased risk for falls; for example, by recruiting those with prior falls history, neurological conditions that increase fall risk, or fear of falling. One study included long-term care residents,<sup>22</sup> whereas the remaining studies included community-dwelling individuals. Falls monitoring periods ranged from 2 weeks to 1 year. The experimental intervention in 3 studies focused solely on PBT<sup>19,37,38</sup>; in all other studies, PBT was included as part of a broader exercise program. An “active” control group was included in 6 studies: for 3 studies, the control intervention was specifically designed to have minimal effect on balance control<sup>19,33,35</sup>; for 2 studies, the control intervention included

balance and mobility exercises<sup>34,38</sup>; and for 1 study, the control intervention included individualized exercises that may have benefited balance control.<sup>22</sup> Falls were typically defined as events where the person came to rest unintentionally on the ground, floor, or other lower level.<sup>40</sup> All studies collected falls data via participant self-report; however, the study that involved individuals in long-term care also included nursing reports of falls.<sup>22</sup> Three studies used diaries (or similar means) to collect falls data prospectively<sup>19,33,38</sup>; 1 study collected falls data retrospectively at the end of the monitoring period<sup>34</sup>; and 4 studies used a “continuous retrospective” method, with a member of the research team con-

tacting participants daily,<sup>23</sup> fortnightly,<sup>37</sup> or monthly<sup>22,35</sup> to ask if they had fallen.

**Intervention Characteristics**

Intervention characteristics are described according to the FITT (ie, frequency, intensity, time, and type of perturbation training) principle as well as the overall intervention duration. For the purpose of PBT, the “time” principle is equivalent to the amount of training per session (ie, number of perturbations). One study did not report the prescribed intervention duration or the number or frequency of sessions.<sup>34</sup> Five studies reported training session frequency of 3 times per week,<sup>19,23,33,35,38</sup> 1 study reported participants trained

## Does Perturbation-Based Balance Training Prevent Falls?

**Table 1.**

Characteristics of Studies Included in the Analysis

Study	Sample	Control/Comparison Intervention	Experimental Intervention	Monitoring Duration
Shimada et al, <sup>22</sup> 2004	Frail long-term care residents at high risk for falls (age range=66–98 y)	Individualized usual exercise (eg, physical therapy for pain, stretching, resistance training) (n=11)	Usual exercise plus perturbed walking on a treadmill, 600 min over 6 mo (1–3 times per week) (n=15)	6 mo
Protas et al, <sup>23</sup> 2005	Men with Parkinson disease (mean age=72 y)	Nothing (n=9)	Gait and step training with treadmill-based perturbations to stance, ~25–35 perturbations per session, 3 times per week for 8 wk (n=9)	2 wk
Maki et al, <sup>38</sup> 2008	Older adults attending a falls prevention program (age range=69–89 y)	Voluntary stepping and reach-to-grasp training (n=4)	Moving platform perturbations to stance to train stepping and grasping reactions, 335–774 perturbations total (n=4)	1 y
		30-min sessions, 3 times/week for 6 wk		
Mansfield et al, 2010 <sup>19</sup>	Healthy older adults (age range=64–80 y)	Stretching and relaxation exercises (n=15)	Moving platform perturbations to stance to train stepping and grasping reactions, 48–64 perturbations per session (n=16)	1 y
		30-min sessions, 3 times/week for 6 wk		
Smania et al, <sup>33</sup> 2010	Individuals with idiopathic Parkinson disease and postural instability (age range=50–79 y)	Joint mobilization, muscle stretching, and motor coordination exercises not designed to improve balance control (n=27)	Balance training program that included external perturbations (push/pull from a physical therapist; 10 min per session) (n=28)	1 mo
		50-min sessions, 3 times/week for 7 wk		
Lurie et al, <sup>34</sup> 2013	Older adults at risk for falling (age range=65–96 y)	Individualized “standard” physical therapy, including strength, flexibility, balance, and mobility exercises, 3–17 sessions of mean duration of 43 min (n=33)	Standard physical therapy plus treadmill-induced perturbations, 1–19 sessions of mean duration of 44 min (n=26)	3 mo
Rosenblatt et al, <sup>37</sup> 2013	Healthy community-dwelling older women (mean age=65 y)	Nothing (n=80)	Backward-directed treadmill perturbations, four 1-h sessions over 2 wk, average of 20 perturbations per session <sup>a</sup> (n=82)	1 y
Shen and Mak, <sup>35</sup> 2014	Individuals with idiopathic Parkinson disease (mean age=64 y)	Lower-extremity strength training (n=23)	Voluntary stepping and walking with external perturbation delivered by a treadmill or manually (n=22)	1 y
		60-min sessions, 3 times/week for 8 wk (delivered in two 4-wk blocks with 4 wk of home exercise between blocks)		

<sup>a</sup> Data provided by the study authors.



**Table 2.**  
PEDro Scores<sup>a</sup>

Study	PEDro Item											Total
	1 <sup>b</sup>	2	3	4	5	6	7	8	9	10	11	
Shimada et al, <sup>22</sup> 2004	Yes	1	0	1	0	0	1	0	1	1	1	6
Protas et al, <sup>23</sup> 2005	Yes	1	0	1	0	0	0	0	1	1	0	4
Maki et al, <sup>38</sup> 2008	Yes	1	0	0	0	0	0	0	1	0	0	2
Mansfield et al, <sup>19</sup> 2010	Yes	1	1	1	0	0	0	1	1	0	0	5
Smania et al, <sup>33</sup> 2010	Yes	1	1	1	0	1	1	1	0	1	1	8
Rosenblatt et al, <sup>37</sup> 2013	Yes	0	0	1	0	0	1	1	1	1	0	5
Lurie et al, <sup>34</sup> 2013	Yes	1	1	0	0	0	0	1	1	1	1	6
Shen and Mak, <sup>35</sup> 2014	Yes	1	1	1	0	0	1	1	1	1	1	8
Total		7	4	6	0	1	4	5	7	6	4	

<sup>a</sup> PEDro items: 1=eligibility criteria were specified; 2=participants were randomly allocated to groups; 3=allocation was concealed; 4=groups were similar at baseline; 5=participants were blinded to group allocation; 6=therapists were blinded to participant group allocation; 7=individuals who collected falls data were blinded to participant group allocation; 8=falls data were available for at least 85% of participants initially allocated to groups; 9=participants received the treatment as allocated or intention-to-treat analysis was used; 10=statistical analysis of falls data were reported; 11=point estimates and variability of falls data were reported. 0=no; 1=yes.

<sup>b</sup> Not included in the final score.

twice per week,<sup>37</sup> and 1 study reported that the frequency ranged from 1 to 3 sessions per week.<sup>22</sup> When specified (6 studies), participants were prescribed 4 to 24 training sessions over 2 to 8 weeks.<sup>19,23,33,35,37,38</sup> Number of perturbations prescribed per session ranged from 20 to 64, for a total of 80 to 1,536 perturbations over the course of the training programs.<sup>19,23,37,38</sup> Two studies specified the amount of perturbation training in terms of the amount of time (10 minutes per session<sup>33</sup> or 600 minutes total<sup>22</sup>) rather than the number of perturbations. Intensity of training, in terms of the magnitude of the perturbation (eg, velocity or acceleration) was specified in only 2 studies.<sup>22,38</sup> Most studies applied perturbations either using equipment readily available in physical therapist practice (ie, treadmills<sup>22,23,34,35,37</sup>) or manual external perturbations (ie, a push or pull from the physical therapist<sup>33,35</sup>). Two studies used a custom-designed moving platform to deliver the postural perturbations.<sup>19,38</sup>

### Risk of Bias in Included Studies

The PEDro scores ranged from 2 to 8 out of a maximum of 10 (Tab. 2). As is common in physical therapy research, blinding of participants to the treatment was not possible, and no study met this criterion. Only one study<sup>33</sup> blinded therapists to the treatment; a different therapist administered each intervention, and they were not informed which was the control and which was the experimental intervention. In addition to these criteria, the least frequently met PEDro criteria were: falls data available for at least 85% of participants initially allocated (5 studies), allocation concealment (4 studies), point measures and measures of variability reported for falls data (4 studies), and blinding of assessors who collected falls data (or failure to report that assessors were blinded; 4 studies).

### Effects of Intervention

Data on proportion of fallers were available for all studies (Tab. 3). Six of the 8 studies reported that fewer participants in the PBT group experienced falls following training com-

pared with the control group. Individuals who completed PBT were less likely to fall than those in the control groups; the overall risk ratio for all 8 studies combined was 0.71 (95% CI=0.52, 0.96;  $P=.02$ ; Fig. 2). Six of the 8 studies reported lower fall rates in the PBT group compared with the control group. Overall, participants who completed PBT reported fewer falls in daily life than those in the control groups. The rate ratio for all 8 studies combined was 0.54 (95% CI=0.34, 0.85;  $P=.007$ ; Fig. 3).

### Discussion

The results of this meta-analysis provide evidence that PBT appears to both reduce the likelihood of being a faller and reduce the frequency of falling among people at increased risk for falls (ie, older adults and individuals with Parkinson disease). Importantly, the overall effect for fall rate (rate ratio=0.54) was lower than reported in previous meta-analyses of general balance training for falls prevention in older adults (rate ratios=0.65–0.86).<sup>1–5</sup> However, the relative effectiveness of

## Does Perturbation-Based Balance Training Prevent Falls?

**Table 3.**

Number of Participants Who Reported One or More Falls During the Follow-up Period (ie, Number of “Fallers”) and Number of Falls Reported Are Presented for Each Study<sup>a</sup>

Study	Control Group			Experimental Group		
	Number of Fallers	Number of Falls	Sample Size	Number of Fallers	Number of Falls	Sample Size
Shimada et al, <sup>22</sup> 2004	6	11	11	5	8	15
Protas et al, <sup>23</sup> 2005	6	23 <sup>b</sup>	9	5	10 <sup>b</sup>	9
Maki et al, <sup>38</sup> 2008	3 <sup>b</sup>	4 <sup>b</sup>	4	2 <sup>b</sup>	4 <sup>b</sup>	4
Mansfield et al, <sup>19</sup> 2010	4 <sup>b</sup>	4 <sup>b</sup>	15	5 <sup>b</sup>	6 <sup>b</sup>	16
Smania et al, <sup>33</sup> 2010	19 <sup>b</sup>	111	27	8 <sup>b</sup>	36	28
Rosenblatt et al, <sup>37</sup> 2013	45 <sup>b</sup>	91	80	46 <sup>b</sup>	87	82
Lurie et al, <sup>34</sup> 2013	11	32 <sup>b</sup>	33	5	10 <sup>b</sup>	26
Shen and Mak, <sup>35</sup> 2014	13	18 <sup>c</sup>	23	6	6 <sup>c</sup>	22
Total	107	294	202	82	167	202

<sup>a</sup> The natural logarithm for the risk ratio (proportion of fallers) and rate ratio (number of falls) were entered into the meta-analysis (see Figs. 2 and 3).

<sup>b</sup> Data provided by the study authors.

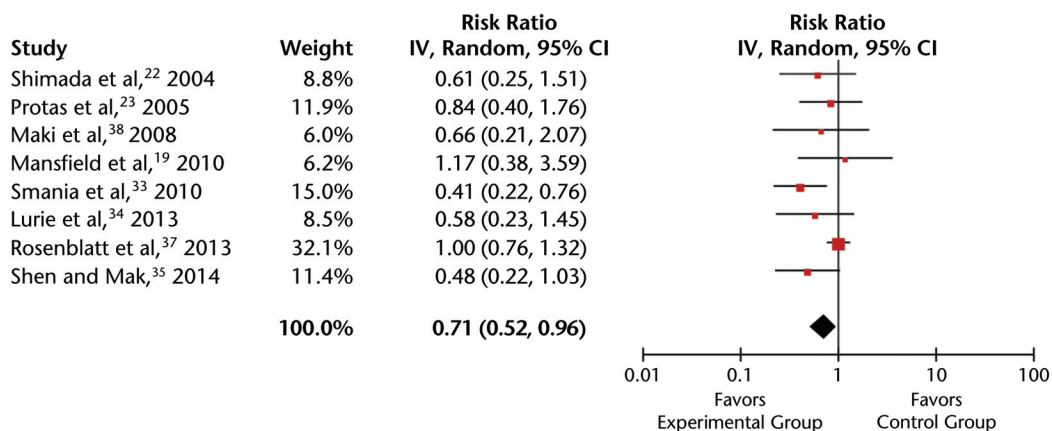
<sup>c</sup> Fall rates reported from the start of the intervention period. Falls that occurred during the intervention period were not included in this count. Additionally, 2 individuals from the control group and 1 participant from the experimental group were excluded from reporting of fall rates; thus, the sample size is 21 per group for number of falls.

PBT compared with more “typical” balance training (ie, training that relies on maintaining stability rather than responding to instability, as is the case for PBT) will need to be evaluated in future studies.

Previous work has demonstrated that PBT improves control of reactions to postural perturbations in the laboratory among healthy older adults.<sup>19,20</sup> Improved control of bal-

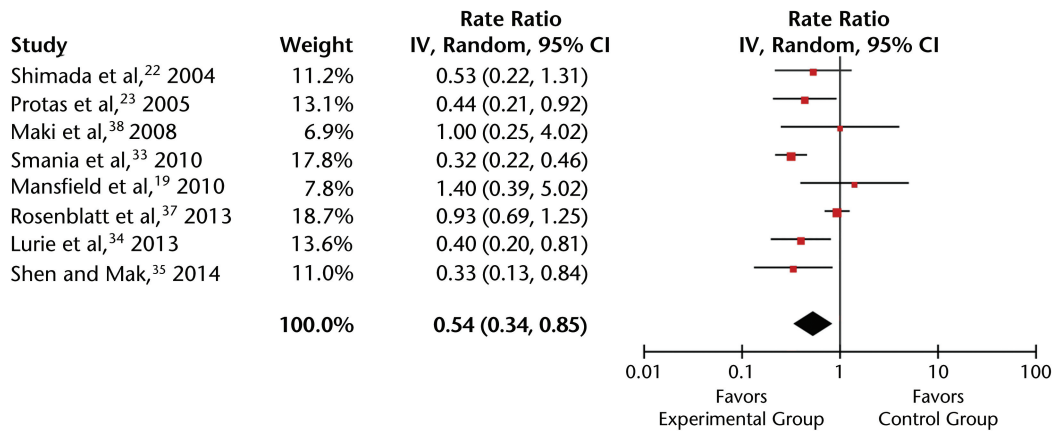
ance reactions may translate to improved ability to respond to an unexpected “real world” loss of balance, thereby preventing falls. There is evidence that the effects of PBT are specific to the nature of the perturbations experienced in training. One study included in the current meta-analysis only applied “forward fall” postural perturbations in training (ie, simulated trips).<sup>37</sup> Although this study did not report a statisti-

cally significant reduction in total falls with training, there was a significant decrease in the number of falls resulting from trips. These results imply that training to respond to simulated trips may specifically improve the ability to respond to trips occurring in daily life but that these training effects do not translate to other types of postural perturbations experienced in daily life. Thus, we recommend that PBT programs include a



**Figure 2.**

Results of meta-analysis for proportion of “fallers.” The risk ratio was calculated from the proportion of fallers (see Tab. 2). Studies were heterogeneous ( $I^2=31\%$ ). The natural logarithm of the risk ratio and standard error of the risk ratio was calculated based on the proportion of fallers in each group for each study and included in the meta-analysis. The overall risk ratio was 0.71 (95% confidence interval=0.52, 0.96;  $P=.02$ ). IV=inverse variance.



**Figure 3.**

Results of meta-analysis for rate of falls. The rate ratio was calculated from fall rates (ie, number of falls per person reported during the follow-up period; Tab. 2). Studies were heterogeneous ( $I^2=73\%$ ). The natural logarithm of the rate ratio and standard error of the rate ratio were calculated based on the number of falls in each group for each study and included in the meta-analysis. The overall rate ratio was 0.54 (95% confidence interval=0.34, 0.85;  $P=.007$ ). IV=inverse variance.

variety of perturbation modalities, directions, amplitudes, and concurrent cognitive and motor tasks to train balance reactions in varied situations. Ultimately, this approach may result in a greater reduction in fall rates compared with PBT programs that use a single perturbation modality.

We included studies in the current analysis if they involved 2 or more sessions of perturbation training. However, it is possible that a single session of 24 perturbations is sufficient to bring about lasting improvements in reactive balance control<sup>20</sup> and prevent falls in daily life.<sup>41</sup> Three of the studies in the current review aimed to achieve a dose of approximately 700 to 1,150 perturbations over several weeks of training.<sup>19,23,38</sup> However, one study only included approximately 80 perturbations over 4 sessions.<sup>37</sup> Thus, the optimal dose of perturbation training for causing lasting changes in reactive balance control must be determined. Additionally, the potential benefit of “booster” training sessions after an initial period of training should be explored.<sup>41</sup>

Most of the included studies compared PBT with an “active” control group. The characteristics of the control activities varied widely from low-intensity stretching exercises with minimal physiological benefit<sup>19</sup> to activities resembling current “best practice” for improving balance and mobility and for preventing falls (eg, strengthening exercises, activities to challenge static and dynamic balance, gait training).<sup>34</sup> Existing evidence suggests that exercise, specifically exercise that challenges balance control, can prevent falls. Evidence for novel interventions can only be provided by comparing the effect of the novel intervention against current best practice.<sup>42</sup> Thus, future studies of novel interventions for falls prevention should include a control group that engages in activities that have previously been shown to prevent falls.

**Limitations**

Study quality was generally low to fair, with half of the studies scoring 5 or less on the PEDro scale. Thus, despite the significant effect of perturbation training on falls with the current meta-analysis, the evidence

for perturbation training is currently limited by the quality of the studies included. All studies included were potentially biased by failure to blind research participants to the intervention. True blinding of research participants is not possible for exercise interventions of this nature<sup>43</sup>; however, when study designs incorporate an active control intervention, participants in the control group may believe that the intervention is beneficial. One study attempted to blind the therapists administering the intervention by having different therapists administer the different interventions.<sup>33</sup> However, this approach may have the effect of further biasing the results; as there were 2 differences between the groups (therapist and intervention type), it is not clear if the differences between the 2 groups were due to differences in the intervention or to differences in the way the interventions were administered by the therapists. Study authors did not always report the interventions with enough detail to be replicated. In particular, the intensity (magnitude) and number of perturbations were not well described. Furthermore, it



was not always clear if the intervention was carried out as prescribed. Thus, there is a need for improved reporting of balance training intervention characteristics.<sup>44</sup>

Terminology regarding PBT is not consistent in current literature. Thus, a simple literature search would not have identified all appropriate studies. However, we are reasonably confident that the multistage search strategy used, including snowball sampling, enabled us to identify all relevant studies. Additionally, all meta-analyses are potentially limited by publication biases toward studies reporting positive results. We attempted to address this limitation by seeking and including unpublished falls data from randomized controlled trials of PBT. Furthermore, only 2 studies included in the current meta-analysis reported positive results in terms of occurrence of falls<sup>33,35</sup> (ie, a statistically significant reduction in falls with PBT compared with the control group). Finally, we identified only 8 studies for inclusion in the meta-analysis. The study designs differed in several ways that could have contributed to differing results among studies, including population studied, characteristics of training (eg, frequency, duration, method of perturbation, inclusion of nonperturbation balance training), characteristics of the control intervention, method of collection of falls data, and duration of falls follow-up period. Thus, we were unable to conduct exploratory sub-analyses to determine if the effects of PBT differ based on these differing study or population characteristics.

Perturbation-based balance training appears to reduce fall rates among older adults and individuals with Parkinson disease. Additional work is needed to determine if PBT is superior to more traditional, well-established exercise programs for preventing falls. Future work also should consider the effect of PBT on

balance confidence, daily physical activity, and participation.

Dr Mansfield provided concept/idea/project design. All authors provided writing and data collection. Dr Mansfield provided data analysis and project management. All authors provided consultation (including review of manuscript before submission). The authors thank Jessica Babineau, BA, MLIS, for her assistance with the literature search.

Dr Patterson was supported by a Focus on Stroke personnel award from the Heart and Stroke Foundation and the Canadian Stroke Network.

DOI: 10.2522/ptj.20140090

### References

- 1 Province MA, Hadley EC, Hornbrook MC, et al. The effects of exercise on falls in elderly patients: a preplanned meta-analysis of the FICSIT trials. *JAMA*. 1995; 273:1341-1347.
- 2 Robertson MC, Campbell AJ, Gardner MM, Devlin N. Preventing injuries in older people by preventing falls: a meta-analysis of individual level data. *J Am Geriatr Soc*. 2002;50:905-911.
- 3 Chang JT, Morton SC, Rubenstein LZ, et al. Interventions for the prevention of falls in older adults: systematic review and meta-analysis of randomised clinical trials. *BMJ*. 2004;328:680-683.
- 4 Sherrington C, Whitney JC, Lord SR, et al. Effective exercise for the prevention of falls: a systematic review and meta-analysis. *J Am Geriatr Soc*. 2008;56:2234-2243.
- 5 Gillespie LD, Robertson MC, Gillespie WJ, et al. Interventions for preventing falls in older people living in the community. *Cochrane Database Syst Rev*. 2012;9: CD007146.
- 6 Batchelor F, Hill K, Mackintosh S, Said C. What works in falls prevention after stroke? A systematic review and meta-analysis. *Stroke*. 2010;41:1715-1722.
- 7 Verheyden GS, Weerdesteijn V, Pickering RM, et al. Interventions for preventing falls in people after stroke. *Cochrane Database Syst Rev*. 2013;5:CD008728.
- 8 Maki BE, McIlroy WE. Postural control in the older adult. *Clin Geriatr Med*. 1996; 12:635-658.
- 9 Robinovitch SN, Feldman F, Yang Y, et al. Video capture of the circumstances of falls in elderly people residing in long-term care: an observational study. *Lancet*. 2013; 381:47-54.
- 10 Shumway-Cook A, Woollacott MH. *Motor Control: Translating Research Into Clinical Practice*. 3rd ed. Philadelphia, PA: Lippincott Williams & Wilkins; 2007.
- 11 Schieppati M, Nardone A. Free and supported stance in Parkinson's disease: the effect of posture and "postural set" on leg muscle responses to perturbation and its relation to the severity of the disease. *Brain*. 1991;114:1227-1244.
- 12 Maki BE, Edmondstone MA, McIlroy WE. Age-related differences in laterally directed compensatory stepping behavior. *J Gerontol A Biol Sci Med Sci*. 2000;55: M270-M277.
- 13 Mansfield A, Inness EL, Wong JS, et al. Is impaired control of reactive stepping related to falls during inpatient stroke rehabilitation? *Neurorehabil Neural Repair*. 2013;27:526-533.
- 14 Horak FB, Henry SM, Shumway-Cook A. Postural perturbations: new insights for treatment of balance disorders. *Phys Ther*. 1997;77:517-533.
- 15 Maki BE, McIlroy WE. Change-in-support balance reactions in older persons: an emerging research area of clinical importance. *Neurol Clin*. 2005;23:751-783.
- 16 Pai Y-C, Bhatt TS. Repeated-slip training: an emerging paradigm for prevention of slip-related falls among older adults. *Phys Ther*. 2007;87:1478-1491.
- 17 Rogers MW, Johnson ME, Martinez KM, et al. Step training improves the speed of voluntary step initiation in aging. *J Gerontol A Biol Sci Med Sci*. 2003;58:46-51.
- 18 Marigold DS, Eng JJ, Dawson AS, et al. Exercise leads to faster postural reflexes, improved balance and mobility, and fewer falls in older persons with chronic stroke. *J Am Geriatr Soc*. 2005;53:416-423.
- 19 Mansfield A, Peters AL, Liu BA, Maki BE. Effect of a perturbation-based balance-training program on compensatory stepping and grasping reactions in older adults: a randomized controlled trial. *Phys Ther*. 2010;90:476-491.
- 20 Bhatt T, Yang F, Pai Y-C. Learning to resist gait-slip falls: long-term retention in community-dwelling older adults. *Arch Phys Med Rehabil*. 2012;93:557-564.
- 21 Parijat P, Lockhart TE. Effects of moveable platform training in preventing slip-induced falls in older adults. *Ann Biomed Eng*. 2012;40:1111-1121.
- 22 Shimada H, Obuchi S, Furuta T, Suzuki T. New intervention program for preventing falls among frail elderly people: the effects of perturbed walking exercise using a bilateral separated treadmill. *Am J Phys Med Rehabil*. 2004;83:493-499.
- 23 Protas EJ, Mitchell K, Williams A, et al. Gait and step training to reduce falls in Parkinson's disease. *Neurorehabilitation*. 2005; 20:183-190.
- 24 Higgins JPT, Green S. *Cochrane Handbook for Systematic Reviews of Interventions: Version 5.1.0*. The Cochrane Collaboration. Updated March 2011. Available at: <http://www.cochrane-handbook.org>. Accessed August 1, 2014.
- 25 Liberati A, Altman DG, Tetzlaff J, et al. The PRISMA statement for reporting systematic reviews and meta-analyses of studies that evaluate health care interventions: explanation and elaboration. *PLoS Med*. 2009;6:e1000100.

- 26 Fegran L, Hall EO, Uhrenfeldt L, et al. Adolescents' and young adults' transition experiences when transferring from paediatric to adult care: a qualitative metasynthesis. *Int J Nurs Stud.* 2014;51:123-135.
- 27 Groene O, Botje D, Suñol R, et al. A systematic review of instruments that assess the implementation of hospital quality management systems. *Int J Qual Health Care.* 2013;25:525-541.
- 28 Sweeney S, Obure CD, Maier CB, et al. Costs and efficiency of integrating HIV/AIDS services with other health services: a systematic review of evidence and experience. *Sex Transm Infect.* 2012;88:85-99.
- 29 Maher CG, Sherrington C, Herbert RD, et al. Reliability of the PEDro scale for rating quality of randomized controlled trials. *Phys Ther.* 2003;83:713-721.
- 30 de Morton NA. The PEDro scale is a valid measure of the methodological quality of clinical trials: a demographic study. *Aust J Physiother.* 2009;55:129-133.
- 31 Higgins JPT, Thompson SG. Quantifying heterogeneity in a meta-analysis. *Stat Med.* 2002;21:1539-1558.
- 32 DerSimonian R, Laird N. Meta-analysis in clinical trials. *Control Clin Trials.* 1986;7:177-188.
- 33 Smania N, Corato E, Tinazzi M, et al. Effect of balance training on postural instability in patients with idiopathic Parkinson's disease. *Neurorehabil Neural Repair.* 2010;24:826-834.
- 34 Lurie JD, Zagaria AB, Pidgeon DM, et al. Pilot comparative effectiveness study of surface perturbation treadmill training to prevent falls in older adults. *BMC Geriatr.* 2013;13:49.
- 35 Shen X, Mak MKY. Technology-assisted balance and gait training reduces falls in patients with Parkinson's disease: a randomized controlled trial with 12-month follow-up. *Neurorehabil Neural Repair.* 2015;29:103-111.
- 36 Halvarsson A, Franzén E, Farén E, et al. Long-term effects of new progressive group balance training for elderly people with increased risk of falling: a randomized controlled trial. *Clin Rehabil.* 2013;27:450-458.
- 37 Rosenblatt NJ, Marone J, Grabiner MD. Preventing trip-related falls by community-dwelling adults: a prospective study [Erratum in: *J Am Geriatr Soc.* 2014;62:1003]. *J Am Geriatr Soc.* 2013;61:1629-1631.
- 38 Maki BE, Cheng KC-C, Mansfield A, et al. Preventing falls in older adults: new interventions to promote more effective change-in-support balance reactions. *J Electromyogr Kinesiol.* 2008;18:243-254.
- 39 Mansfield A, Peters AL, Liu BA, Maki BE. A perturbation-based balance training program for older adults: study protocol for a randomised controlled trial. *BMC Geriatr.* 2007;7:12.
- 40 Ory MG, Schechtman KB, Miller P, et al. Frailty and injuries in later life, FICSIT trials. *J Am Geriatr Soc.* 1993;41:283-296.
- 41 Pai YC, Bhatt T, Yang F, Wang E. Perturbation training can reduce community-dwelling older adults' annual fall risk: a randomized controlled trial. *J Gerontol A Biol Sci Med Sci.* 2014;69:1586-1594.
- 42 Dobkin BH. Confounders in rehabilitation trials of task-oriented training: lessons from the designs of the EXCITE and SCILT multicenter trials. *Neurorehabil Neural Repair.* 2007;21:3-13.
- 43 Andrews K. The limitations of randomized controlled trials in rehabilitation research. *Clin Rehabil.* 1991;5:5-8.
- 44 Farlie MK, Robins L, Keating JL, et al. Intensity of challenge to the balance system is not reported in the prescription of balance exercises in randomised trials: a systematic review. *J Physiother.* 2013;59:227-235.

**Appendix.**

Sample Search Strategy (MEDLINE)

1. (perturbat\* adj2 (train\* or rehab\* or exercis\*)).tw.
2. ((platform\* or "dynamic balanc\*" or "slip" or "dynamic stabili\*") adj2 (train\* or rehab\* or exercis\*)).tw.
3. 1 or 2
4. Limit 3 to humans
5. Remove duplicates from 4