



## Training

Most of EHSOs Trainings are available online in Blackboard. Visit [www.ehso.emory.edu](http://www.ehso.emory.edu) for registration information.

### Shipping Training

January 6th at 8:30 am

### Radiation Safety Training

2nd Tuesdays at 1:00 pm

### Laboratory Safety Training

3rd Thursdays at 10:00 am

### Eye Wash Testing

Someone in your lab should test the eyewash station once a month.



**Biosafety Cabinets / Chemical Fume Hoods**  
Certifications are required annually.

### PPE

Personal Protective Equipment  
Choice to be based on potential exposures involved:

- **Eye:** Glasses, goggles & face shields
- **Gloves:** Appropriate for the type of procedure
- **Clothing:** Gowns, lab coats, aprons, coveralls
- **Respirators:** Appropriate for the type of procedure



### Fire Extinguishers

Check fire extinguishers in your lab:

- A. Is it present and mounted in its proper location?
- B. Is it readily accessible?

If it appears to need servicing contact the Maintenance HELP line at 7-7463.

Visit <http://www.epcs.emory.edu/fire/> for more information



Contact Employee Health Services / Emory Healthcare Corporate regarding immunization information (404-728-6437)

## this issue

...Glass Box?  
Stericycle Boxes Everywhere!

## What can I place inside the Glass Box?

By Dionna Thomas



The purpose of the broken glass box is to safely store and dispose of any decontaminated/clean broken glassware, non-infectious slides, empty chemicals containers (excludes containers of acutely hazardous chemicals – P listed chemicals), etc. **The broken glass box must never be used as an alternative to a sharps container. The glass box must not be used to dispose of UV lamps, fluorescent bulbs, or broken mercury thermometers.** UV lamps, fluorescent bulbs, and mercury thermometers must be disposed of through EHSO. It is also important to remember that the glass box is considered regular trash. This means that housekeeping is responsible for removing these containers from the lab. Therefore, any potentially infectious glass materials or sharp objects should be discarded into an appropriate sharps container.

Pasteur pipettes used in tissue culture, microscope slides, culture tubes, syringes, razor blades, etc should be disposed of into a sharps container.

In addition, the glass box should never be filled to capacity. You should never smash or compress glass inside the box as an effort to increase the volume inside the container. Waste should be added to the container until it is 3/4ths full. It should be taped closed, labeled with the word “trash”, and placed in the hallway.

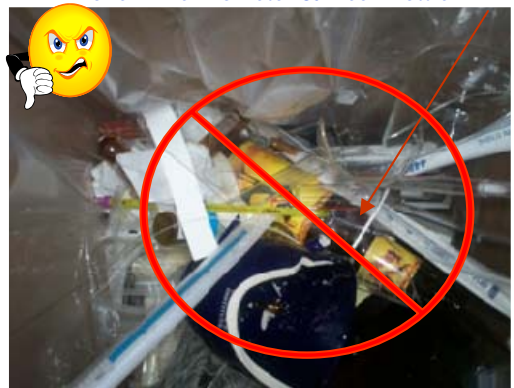
**Remember: The broken glass boxes are for clean broken glass:**

- \* **No** Needles or Razor Blades
- \* **No** contaminated glassware, pipettes, slides, cover slips, or capillary tubes
- \* **No** beverage containers
- \* **No** radioactive materials
- \* **No** UV lamps, fluorescent bulbs, or mercury thermometers
- \* **No** chemicals or biological materials

Glass Box Overfilled



Broken Thermometer & Beer Bottle





## Waste Disposal

Chemical and Radiation drop-off locations are:

Woodruff Labs – WMRB L302,  
Thursdays 1PM – 4PM

Whitehead & Rollins labs –  
Whitehead G44  
Thursdays 9Am –noon

Chemistry Department,  
chemicals only – Emerson 133

Other Buildings -  
Request chemical pickup  
by calling 7-7091  
Or send an email to  
chemwaste@emory.edu

Request Radiation pickup via  
EHS assist from website by  
Tuesday 5 PM for Wednesday  
pickup

Complete and sign your chemical  
disposal form or EHS assist  
radiation disposal form for both  
pickups and drop-offs.

## Volunteers & Minors

Contact Research Safety at  
404-727-8863 for assistance with  
volunteers and minors working  
in your lab.

Lab Rat January 2010

## Notice

- ◇ This newsletter is a tool to help fulfill a legal requirement for ongoing safety training.
- ◇ Supervisors are responsible for ensuring that individuals in their area have read and understood the information that applies to their area.
- ◇ The signed newsletter should be placed into the PIs EHSO Binder.

Signature indicates: I have read and I understand the information in this issue of Lab Rat Newsletter. Use an additional sheet of paper for more signatures, if needed and attach to this document.

1. \_\_\_\_\_
2. \_\_\_\_\_
3. \_\_\_\_\_
4. \_\_\_\_\_
5. \_\_\_\_\_
6. \_\_\_\_\_
7. \_\_\_\_\_
8. \_\_\_\_\_
9. \_\_\_\_\_
10. \_\_\_\_\_

## Stericycle Boxes Everywhere!

By Dionna Thomas

The contents of the Stericycle box is considered to be a biological hazard. Here are some tips to aid you in storing your boxes appropriately.

**Stericycle boxes can not be stored in the hallway-**To prevent unnecessary personnel contact with biohazard waste, the labs must store their filled Stericycle boxes inside of the lab until the night before a scheduled pick up. At that time, the labs may leave the Stericycle boxes in the hallway provided that they are securely taped shut and the barcode is affixed. The boxes should never be placed in front of electrical panels, emergency showers, or fire extinguishers. If your lab frequently generates biohazard waste, then storing these boxes inside of the lab may clutter your work area. If so, contact Stericycle to increase the frequency of waste removal.

**Stericycle boxes should not be left uncovered or open in the lab-** Biohazard waste containers must be closed except when adding waste. Stericycle offers lids that are specifically made to cover and seal the box while you are accumulating waste. The price is around \$35.00. Once purchased, the lids can be disinfected and reused.

**Stericycle boxes should not be overfilled** –Overfilling your waste container may cause you to put yourself and others at risk. You may be tempted to compress the waste by hand or use your foot in an effort to increase the volume in the container. This is unsafe. Forcefully compressing the waste can generate splatters of infectious liquid and possibly cause minor scrapes or cuts on your hands. Once the Stericycle box is 3/4ths full, then it should be taped shut and placed in the proper location.



Are you interested in submitting any tips or articles for the monthly Lab Rat Newsletter....Submit your ideas, suggestions, articles, etc. to [biosafe@emory.edu](mailto:biosafe@emory.edu) and type Lab Rat Submission in the subject line.



### Building Liaisons

Each building has been assigned an EHS Specialist to assist with any questions/concerns you may have. The Liaisons will also conduct a monthly walkthrough of each lab.

- **Dionna Thomas 404-727-4673**  
Woodruff, Woodruff Extension, & Winship
- **Meagan Parrott 404-712-9480**  
Dental, Clinic B, Pediatrics, North Decatur, Carlos Museum, Yerkes, Hope Clinic, Medical Office Tower, Crawford Long, RSPH & Oxford College
- **Rodrick Esaw 404-727-1348**  
Whitehead, Math & Science, Anthropology, Wesley Woods, Emerson, Briarcliff Campus & Atwood
- **Vijayasmitha Moter 404-727-4796**  
Rollins

Visit [www.ehso.emory.edu](http://www.ehso.emory.edu) for updated forms and information.