



# The Lab Rat NEWSLETTER

## Training

Training information found at:  
[ehso.emory.edu/training](http://ehso.emory.edu/training)

## Chemical Waste

Email [chemwaste@emory.edu](mailto:chemwaste@emory.edu)  
for chemical waste pick-ups or  
requests.

Include a [chemical waste disposal  
form](#) with all waste.

## Radioactive Waste

Request radioactive waste pick-  
ups through EHS Assist.

Include a [radioactive waste  
disposal form](#) with all waste.

## PPE

Choose from the following based  
on the potential exposures  
involved:

- **Eye**– Glasses, goggles & face shields
- **Gloves**– Appropriate for the type of procedure.
- **Clothing**– Gowns, lab coats, aprons, coveralls.
- **Respirators**– Appropriate for the type of procedure.

## Eye Wash Testing

Eye wash stations should be tested  
**once per month.**

## Certifications

The following require **annual**  
certification:

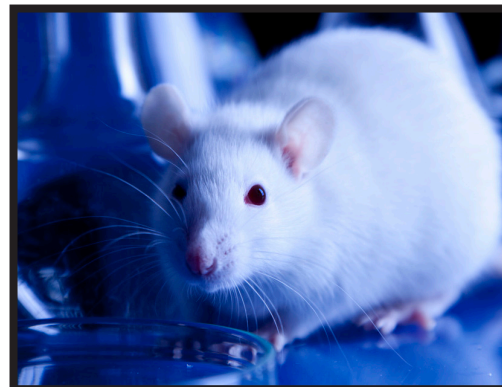
- Biosafety Cabinets
- Geiger Meters
- Chemical Fume Hoods

## Working with Chemicals in Animals

In support of the Chemical Safety program, EHSO and members of the Chemical Safety Committee review chemicals to determine if an agent requires Chemical Safety Approval.

Chemicals are evaluated based on the characteristics of the hazardous agent, route of administration, the dose, the length of the study, and the animal species used.

If you plan to conduct research studies that involve administering drugs or chemicals to animals, review the Chemical Notice of Intent Guidelines available at [ehso.emory.edu](http://ehso.emory.edu). The



Guidelines provide information on how to obtain Chemical Safety Approval.

Additionally, you will find examples of the types of chemicals the Committee needs to evaluate.

## New Common Room Signage

At Emory, EHSO has already facilitated the updates to external lab signage for main labs. To complete the campus-wide signage update, EHSO will begin generating signs for the common or auxiliary spaces in each research building. This includes cold rooms, cell culture rooms, freezer rooms, etc.

EHSO will approach the completion of common rooms by contacting designated department contacts or each laboratory directly to obtain completed signage forms.

EHSO has set an internal deadline of March 31st for the generation and

**Updated signs will be created using this template.**

posting of common room signs. For questions regarding the signs for your main labs or common rooms, contact your assigned Research Safety Building Liaison.

NO FOOD OR DRINK					GLOVES REQUIRED WHEN WORKING IN LAB					LAB COAT REQUIRED WHEN WORKING IN LAB					EYE PROTECTION REQUIRED WHEN WORKING IN LAB					CLOSED TOE SHOES REQUIRED				
CORROSIVES					CARCINOGEN					REPRODUCTIVE HAZARD					TARGET ORGAN TOXICITY					MUTAGENICITY				
ASPIRATION TOXICITY					RESPIRATORY SENSITIZER					HUMAN HEALTH HAZARDS					AUTHORIZED PERSONNEL ONLY					FLAMMABLE LIQUID				

Atwood

**Template 731**

Lab Emergency Contacts

Name
Phone
Name
Phone
Name
Phone

Emergency/Fire/Police

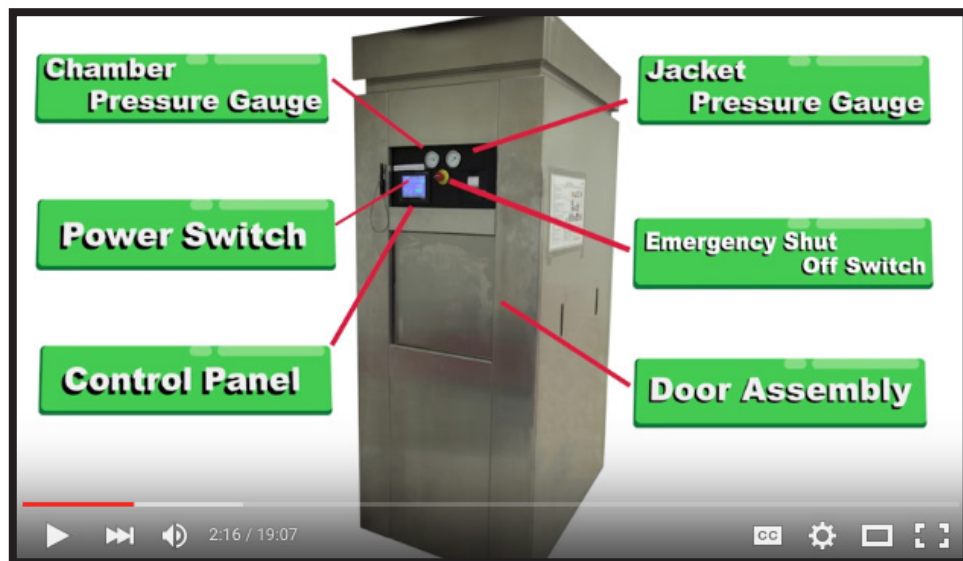
**911**  
(from a campus phone)  
or  
**(404) 727-6111**

Lab Hazard Sign Copyright 2009 Graphics Lab For information call 714-640-3881 or visit [www.labsigns.com](http://www.labsigns.com) Date Modified: 5/25/2014

## Video: Safe Autoclave Use

The [Biosafety and Biosecurity team](#) at [Arizona State University \(ASU\)](#), in partnership with [ASU Creative Student Services](#), has developed a new Autoclave Training Video. The video offers examples of the

types of waste to be autoclaved, Personal protective equipment (PPE) to be worn, spore testing, record keeping requirements, safe loading and unloading, and much more.



Watch the video by visiting ASU on YouTube: <http://bit.ly/1XpaAeV>.

## New Lab Rat Newsletter Blog Home

EHSO's *Lab Rat Newsletter* has a new blog home. Along with other groups under Emory's Office of Research Administration (ORA), EHSO now has its own space under the ORA ScholarBlogs page.

The new blog space houses the past seven years of *Lab Rat Newsletter* articles and PDF publications.

A link to the new blog is on the EHSO homepage, or researchers can visit the blog directly at [scholarblogs.emory.edu/ranews/category/ehso](http://scholarblogs.emory.edu/ranews/category/ehso).

To navigate through the blog site, use the "Search" function on the homepage or click on tags to find related articles. To download old PDFs, search the tag "[Lab Rat PDF](#)."

## Fire Extinguishers

Visual inspections of your fire extinguishers should be conducted **monthly**, confirming the following:

- Is it present and mounted in its proper location? Is it readily accessible?
- Is the pin in place and is the gauge needle in the green?

After confirming these questions, **initial and date the attached tag**.

For **servicing**, contact Campus Services at 404-727-7463.

## Building Liasons

Radiation and Research liasons can be found at the following:

[ehso.emory.edu/about/](http://ehso.emory.edu/about/)

## Feedback

Send comments to:

[biosafe@emory.edu](mailto:biosafe@emory.edu)

We look forward to reading your ideas and comments!

## About This Newsletter

- This newsletter is a tool to help fulfill a legal requirement for ongoing safety training.
- Supervisors are responsible for ensuring that individuals in their area have read and understood the information that applies to their area.
- The signed newsletter should be placed into the PI's EHSO Lab Safety Binder.

# BIORRAFT

Don't forget to register your lab!

Visit our website for more details: [ehso.emory.edu](http://ehso.emory.edu)



### SAFE Lab Spill Cleanup

EHSO's **Spill Response Team** is on-call, 24/7, to assist with safe spill cleanup and disposal. Call the new, dedicated 404-727-2888 right away for all mercury spills and spills you believe may cause harm or injury. See the *Emory Just-in-Time Guide* for additional spill information.

## Signature Here

Your signature indicates that you have read and understand the information in this issue of Lab Rat Newsletter.

*\*Use an additional sheet of paper for more signatures, if needed, and attach to this document.*

1. \_\_\_\_\_
2. \_\_\_\_\_
3. \_\_\_\_\_
4. \_\_\_\_\_
5. \_\_\_\_\_
6. \_\_\_\_\_
7. \_\_\_\_\_
8. \_\_\_\_\_
9. \_\_\_\_\_
10. \_\_\_\_\_
11. \_\_\_\_\_
12. \_\_\_\_\_