

FALL 2020

SHAKESPEARE

ENGLISH 311

Dr. Sarah
Higinbotham

Oxford College
of Emory University

WHO IS IT THAT CAN

Tell me who I am?

King Lear

For over 400 years, Shakespeare's plays have awed, inspired, and shocked audiences: challenging us to contemplate our identities, the government, romantic love, family conflict, law, and even language itself in new ways. They are works of enormous ambition and profound beauty. The course will approach Shakespeare's drama and poetry through a variety of approaches.

SARAH.HIGINBOTHAM@EMORY.EDU

OFFICE HOURS

CANDLER HALL 209

TUTH 1:30-2:30

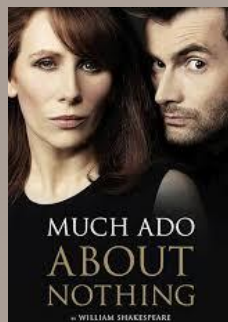
Class meets

TuTh 2:40-3:55

On Zoom



King Lear



*Much Ado
About Nothing*



*Measure for
Measure*

Links

Canvas

Dr. H website

We Should Disagree

I think most of what I have learned that is of any consequence has come through disagreement and further exploration. I welcome your respectful disagreements with me. If we all interpret the articles we are reading in the same way, we have a problem, because no true thinking will be occurring.

Learn to relish when someone disagrees with you! Disagreements make the classroom environment more interesting, productive, generative, and challenging.

Our classroom is not Plato's Cave.

Please note, though, that the college classroom is a place where ideas are exchanged respectfully. I look forward to an environment where this will occur, but I don't have much tolerance for distracting behavior, such as rudeness, texting, sleeping, or side communications during class. If your participation is disruptive to the classroom discussion, if it creates a hostile, intimidating, or offensive environment, you are subject to removal from the classroom at my discretion.

See [Emory Oxford's Code of Conduct](#)



You may revise any of your projects in this Discovery Seminar.

The ability to **accept and act on criticism** is one of the most valuable abilities you can develop. Can you hear constructive criticism with an open mind, build on lessons learned, and make revisions in response to suggestions?

Then I will assess your revised project a second time.

A revision isn't just a quick fix of the obvious errors, but a **"re-vision,"** or **another look** at your project, in which you address feedback. If you choose to revise, it can only help, not hurt your grade. The revision must be emailed to me within one week and include a cover letter, in which you explain to me what and why you revised what you did.

Classroom Policies

In the Zoom Classroom

One of the ways we can foster proximity -- like we have in the physical classroom -- is to all be engaged in Zoom. So I'm making your participation in our Tuesday/Thursday Zoom meetings worth 40% of your overall grade.

For every class day:

25 points: camera on entire class (one 5 minute break allowed)

50 points: each point or question you make, 25 points each (up to two)

25 points: interacting with another person, by building on or pushing back against their earlier point. You must name them, i.e. "*I want to push back against Catherine's suggestion that King Lear is helpless against his daughters.*" or "*I agree with what Shreya said about the humor in Henry V, and want to add that...*"

Keep track of your comments and submit them within each class day's Participation/quiz assignment. I

'll keep track of your camera.

So the quiz submission will look like this:

I asked why the history plays were so popular
I read out loud from *Much Ado About Nothing*
I pushed back on Jack's claim that Shakespeare is too existential I

If you are sick and cannot attend class, you may 1) watch the recorded Zoom video, 2) write a 500-word reflection on the day's reading and discussion, quoting the day's text at least twice and citing it in ML format.

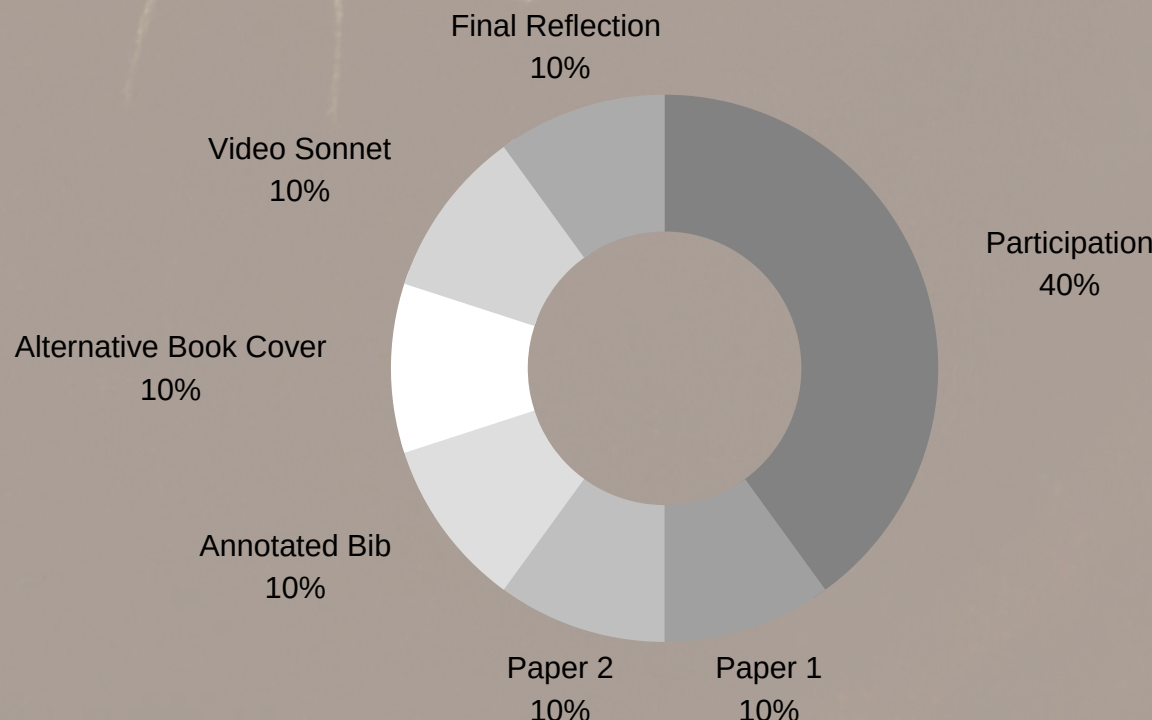
[See Zoom Engagement Policies Here](#)

Important Note on Academic Integrity:

Plagiarism, from the Latin word for "kidnapping," is presenting another person's work as your own.

When you use someone else's language, ideas, images, or other original material without fully acknowledging its source, you will be in violation of [Emory Oxford's Honor Code](#).

Every assignment will have specific, clear guidelines. While the work itself will be challenging, you should never be confused about what is expected or how it will be evaluated. If you do, please ask questions in class, email, or come see me.





Weekly Schedule

COMPLETE READING BEFORE
YOU COME TO CLASS

Thursday, August 20	Introductions & Orientation
Tuesday, August 25	<u>"On Shakespeare," John Milton</u>
Thursday, August 27	<i>King Lear</i> , act 1
Tuesday, September 1	<i>King Lear</i> , act 2
Thursday, September 3	<i>King Lear</i> , acts 3-4
Tuesday, September 8	<i>King Lear</i> , act 5
Thursday, September 10	No Zoom Class: <u>Listen to Podcast, "The Year of Lear"</u> and post 3 points
Tuesday, September 15	Paper 1, written "in class," <i>King Lear</i> and the critics
Thursday, September 17	<i>Measure for Measure</i> act 1
Tuesday, September 22	<i>Measure for Measure</i> act 2
Thursday, September 24	<i>Measure for Measure</i> acts 3-4
Tuesday, September 29	<i>Measure for Measure</i> act 5
Thursday, October 1	Synthesize <i>Measure for Measure</i>
Tuesday, October 6	Paper 2, due at beginning of class
Thursday, October 8	<i>Much Ado About Nothing</i> , act 1
Tuesday, October 13	<i>Much Ado About Nothing</i> , act 2
Thursday, October 15	Dr. Higinbotham participating in seminar (no class)
Tuesday, October 20	<i>Much Ado About Nothing</i> , act 3
Thursday, October 22	<i>Much Ado About Nothing</i> , act 4
Tuesday, October 27	<i>Much Ado About Nothing</i> , act 5
Thursday, October 29	Sonnets 1, 3, 15, 18, 20
Tuesday, November 3	Sonnets 73, 116, 130, 138
Thursday, November 5	Video Poem Due
Tuesday, November 10	Research
Thursday, November 12	Research
Tuesday, November 17	Bibliography due (Use OWL Purdue for format)
Thursday, November 19	TBA
Tuesday, November 24	Final Reflection due