



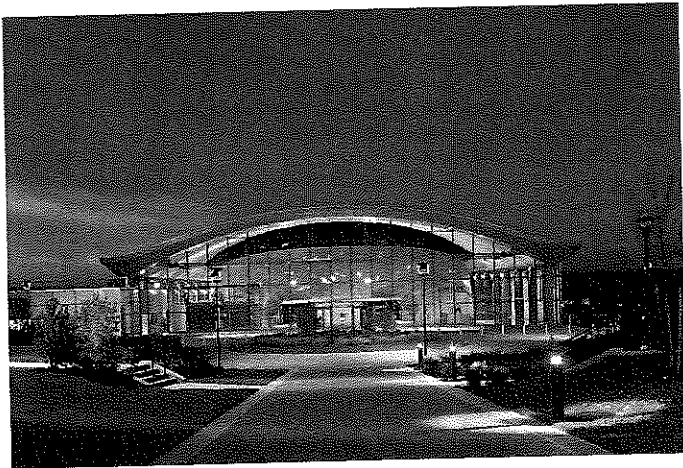
GRIMSHAW

Emory University
Campus Life
Center

**RESPONSE TO
REQUEST FOR QUALIFICATIONS**

Experimental Media & Performing Arts Center

Troy, New York, USA



Founded in 1824, Rensselaer Polytechnic Institute is one of America's leading research universities with a reputation for creative and interactive learning and the application of information technology to education. Its new Experimental Media and Performing Arts Center (EMPAC) is a nexus of technological and artistic innovation and optimized performance space, where the intersection of science and the arts is explored through sound, movement and light.

Grimshaw's appointment resulted from an international design competition. Sited on a steep hillside overlooking the Hudson River, the 200,000-square-foot building extends the existing Rensselaer campus westward. It provides five different performance environments: an elegant 1,200-seat concert hall, a 400-seat theater, two adaptive performance studios, and a dance studio. It also houses audio and video editing suites, artists-in-residence studios, and the campus radio station.

The design team engaged in rigorous testing and analysis of the building components at all scales, from the environmental performance of the envelope to the long term functionality of the theater seating and the acoustic performance of the custom wall panels within the main concert hall. The result was a building that is elegant and expressive, yet fundamentally rooted in performance.



Completion Date:
2003—2008

Client:
Rensselaer Polytechnic Institute

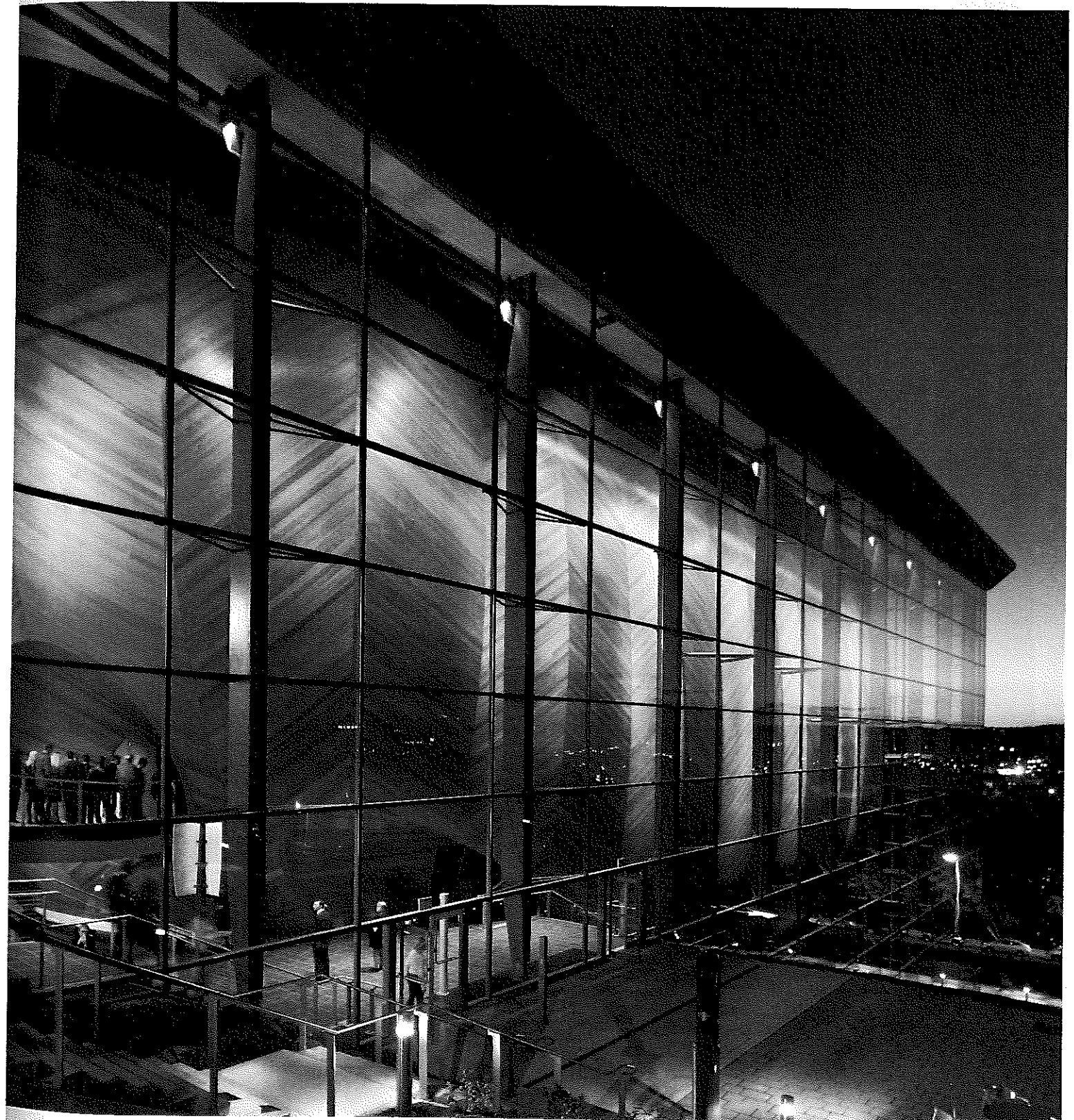
Area:
18,580 sq m / 200,000 sq ft

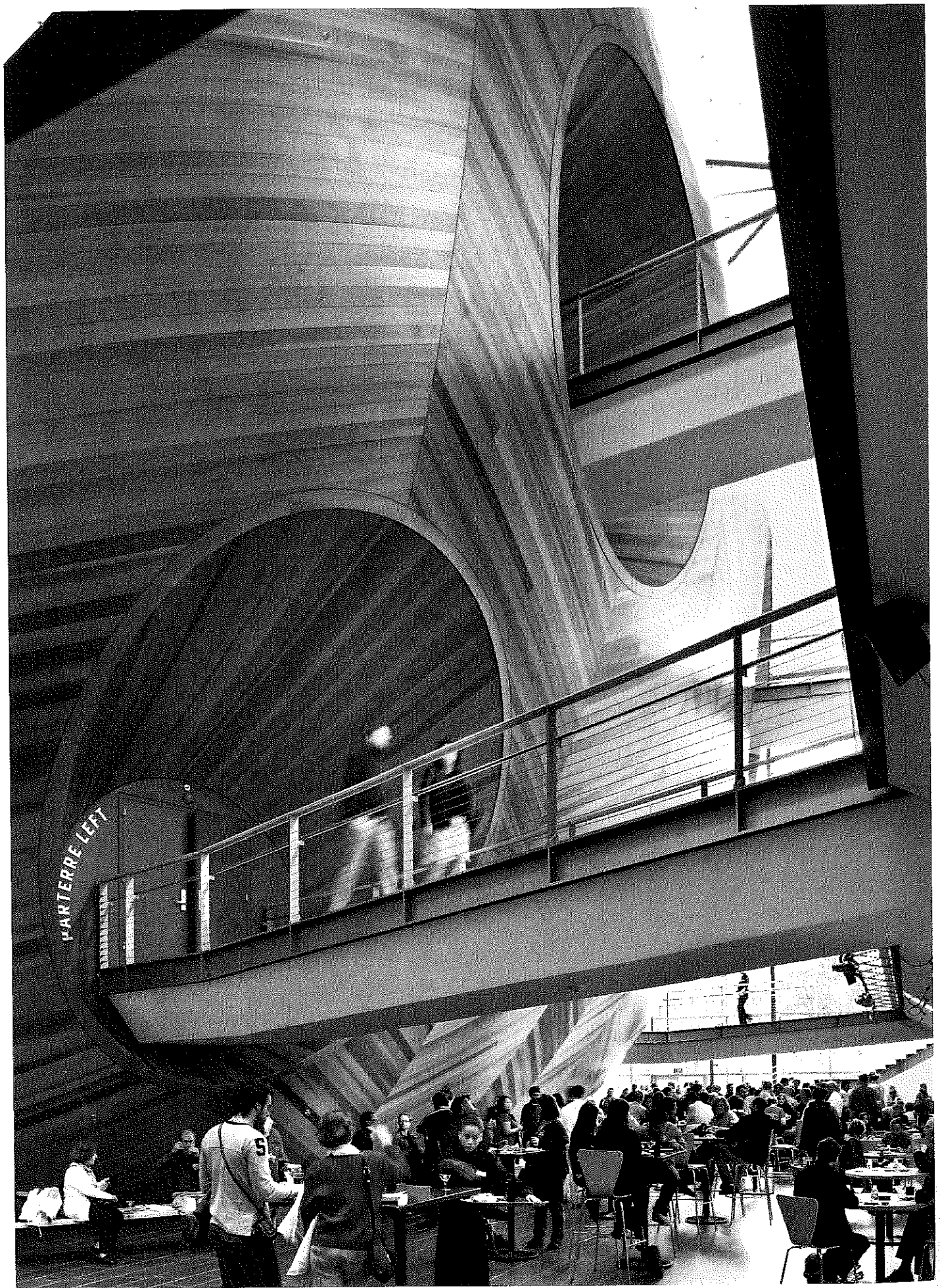
Construction Cost:
\$32.5 M

LEED-Certified:
No

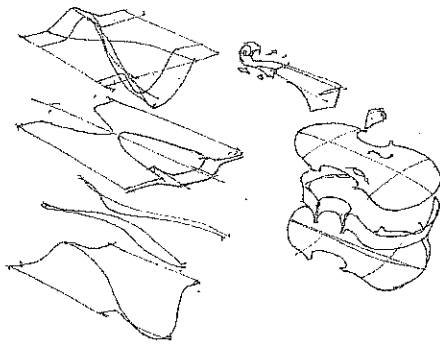
Team:
Principal: Andrew Whalley
Design Lead: Mark Husser
Project Manager: William Horgan
Designer: Nikolas Dando-Haenisch
Designer: Christian
Hoenigschmid-Grossich

Awards:
2009 AIA New York State
Honor Award
2009 Structural Engineering Award
2008 Western Red Cedar Awards
'Sponsor Award Winner'
2008 New York Construction News
'Cultural Project of the Year'

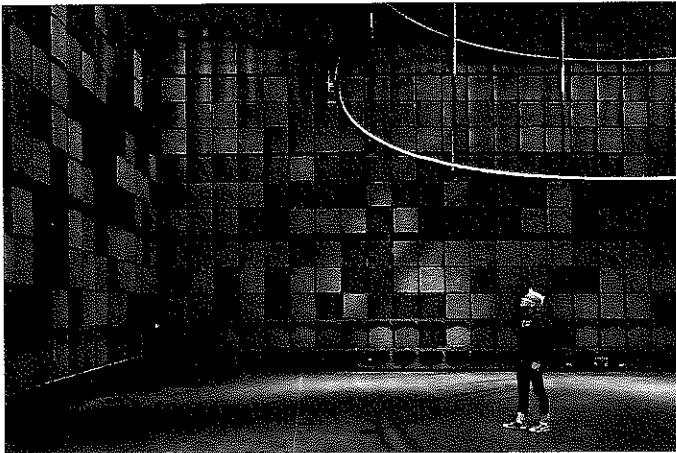




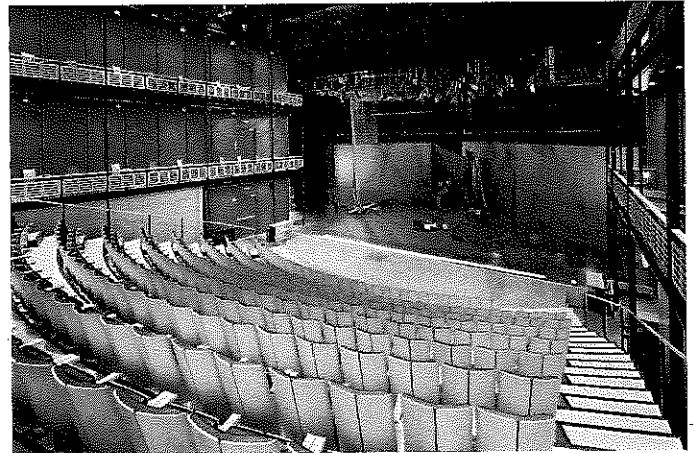
Acoustic performance is manifest in the building's external design and identity, viewed by the public almost as a musical instrument, symbolic of the fine acoustics that lie within.



2

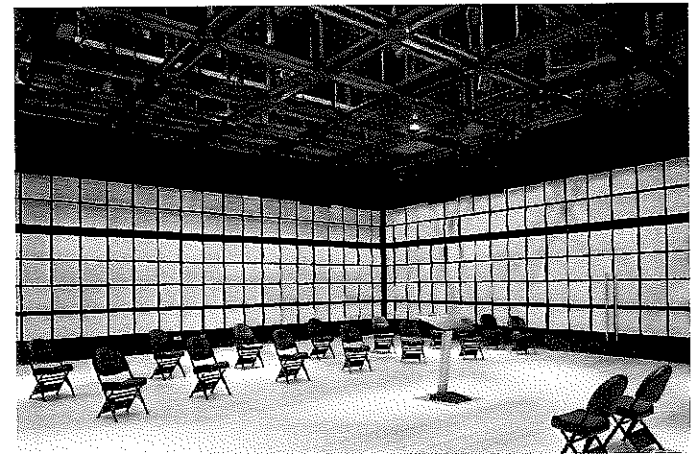


3

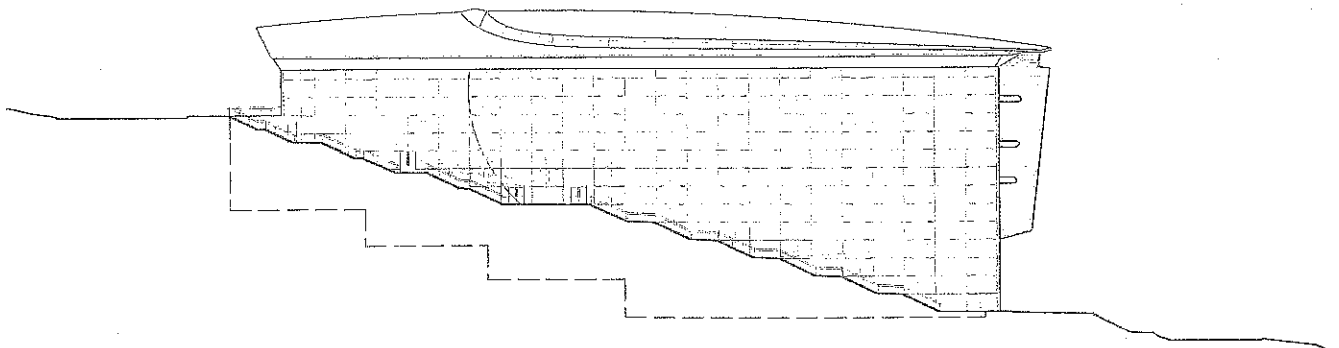


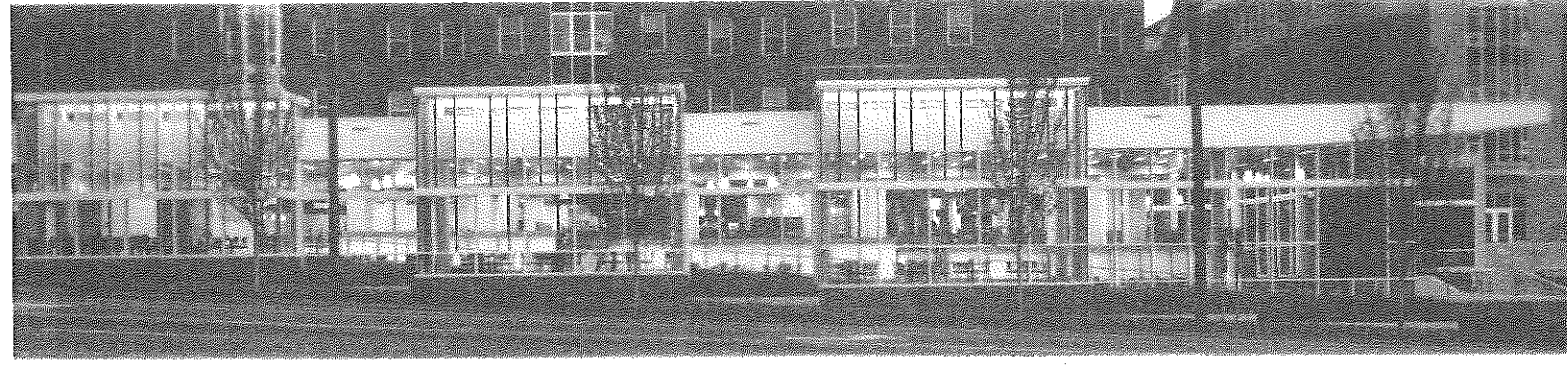
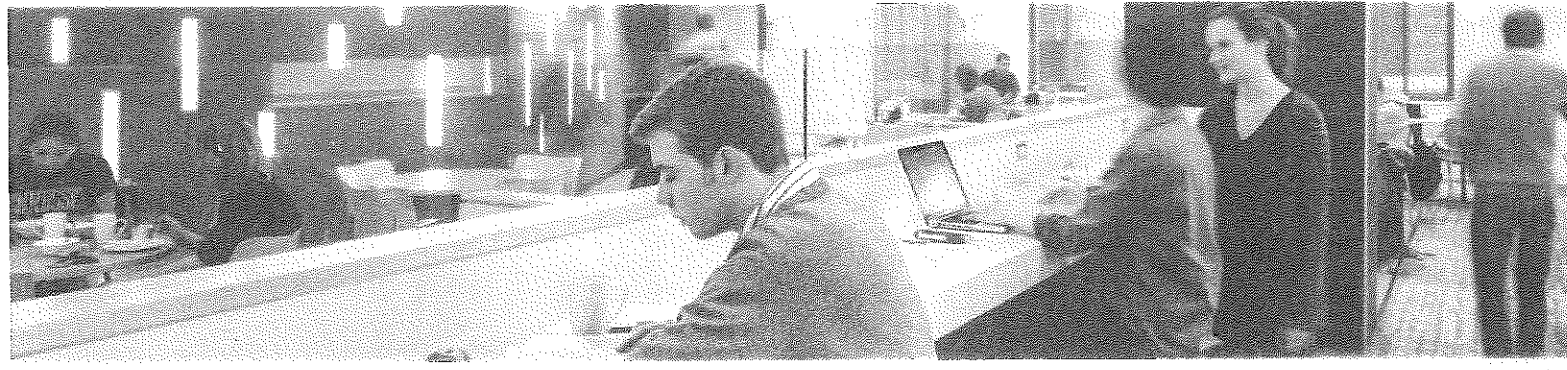
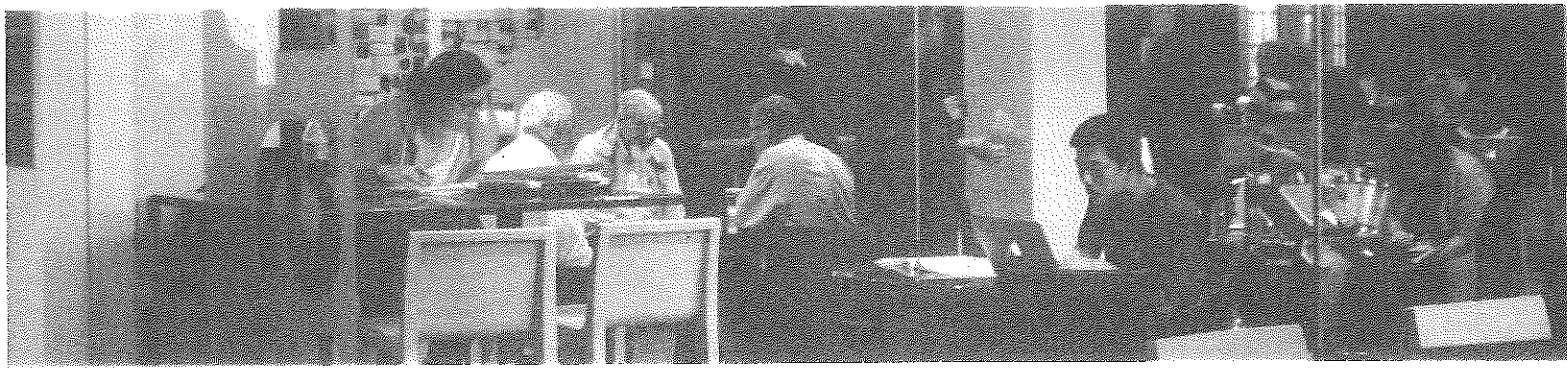
- 1. Detail of the acoustic panels within the concert hall
- 2. The black box environment of Studio One
- 3. The flexible environment of the 400 seat theater
- 4. The studio rearranged for a small group rehearsal

4



Elevation depicting the sloping site conditions

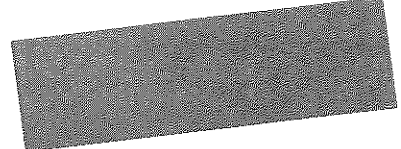




EMORY UNIVERSITY

NEW CAMPUS LIFE CENTER

DUE DATE: OCTOBER 23, 2014 BY 4 P.M.



HANBURY EVANS WRIGHT VLATTAS COMPANY
ARCHITECTURE + PLANNING



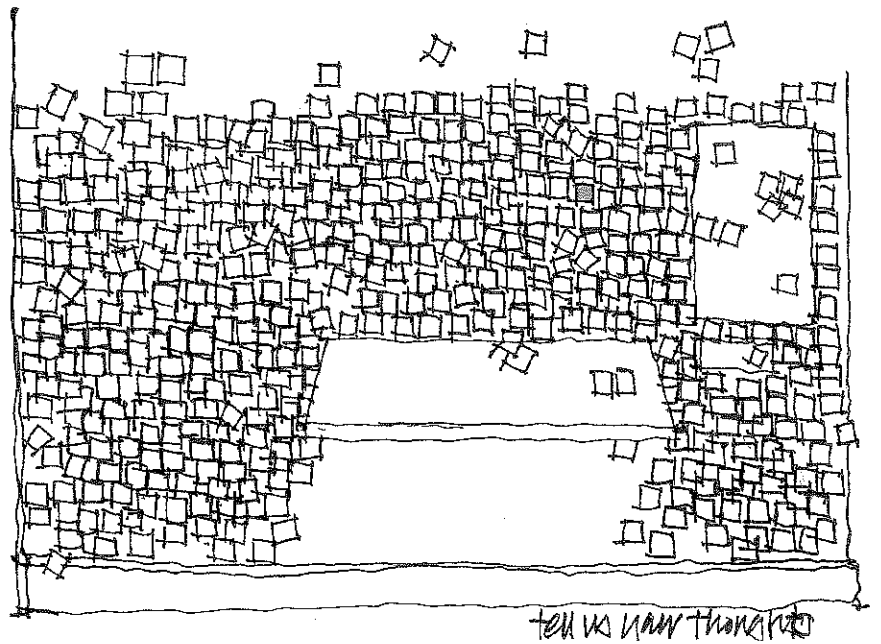
COLLABORATIVE DESIGN

Our most direct path to a successful project centers on the questions that we ask and the information we collect.

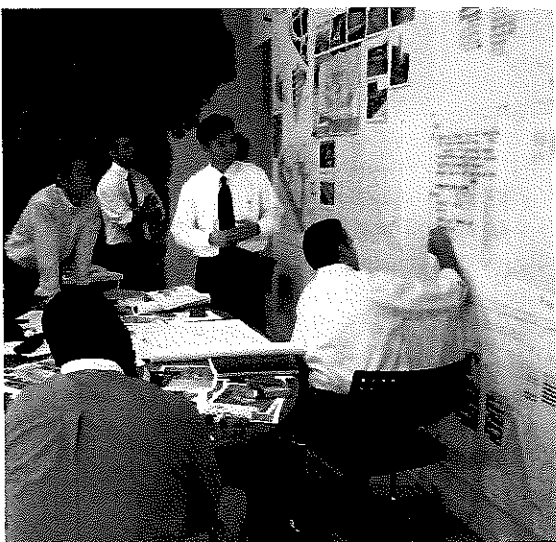
We process what we learn and translate it into exceptional design with transformative outcomes.

It's our ability to ask the right questions – and listen – that sets us apart. We engage decision-makers, stakeholders, students and faculty in workshops and interviews. We get to know every inch of your campus. We embrace your traditions, your vision, your priorities. We study your peers and derive what it takes to compete. Through our process, we will get to know you so well that applying our knowledge, curiosity, creativity, experience and spirit to Emory becomes almost intuitive.

We help you write your story.



UNIQUE CHARACTERISTICS



We allow ourselves the luxury of exploration and discovery of what is most important with each project. Because of our deep experience and knowledge of college and university environments, we understand that we know a lot of the right questions, but that the right answers will vary among our clients.

We are highly collaborative and curious. We welcome our clients as partners in the process of discovery, programming, and design. We respect the deep knowledge that Emory University will bring to that conversation.

Hanbury Evans has an expressed aspiration to be a global resource to higher education. As we endeavor to serve in that role, our recognition as expert practitioners and thought-leaders exploring the challenges and opportunities facing higher education, through campus design and research, and with experience on over 140 campuses nation-wide provides us a unique and unparalleled perspective. Our exuberant focus on higher education will undoubtedly contribute to the success of the Emory Campus Life Center.



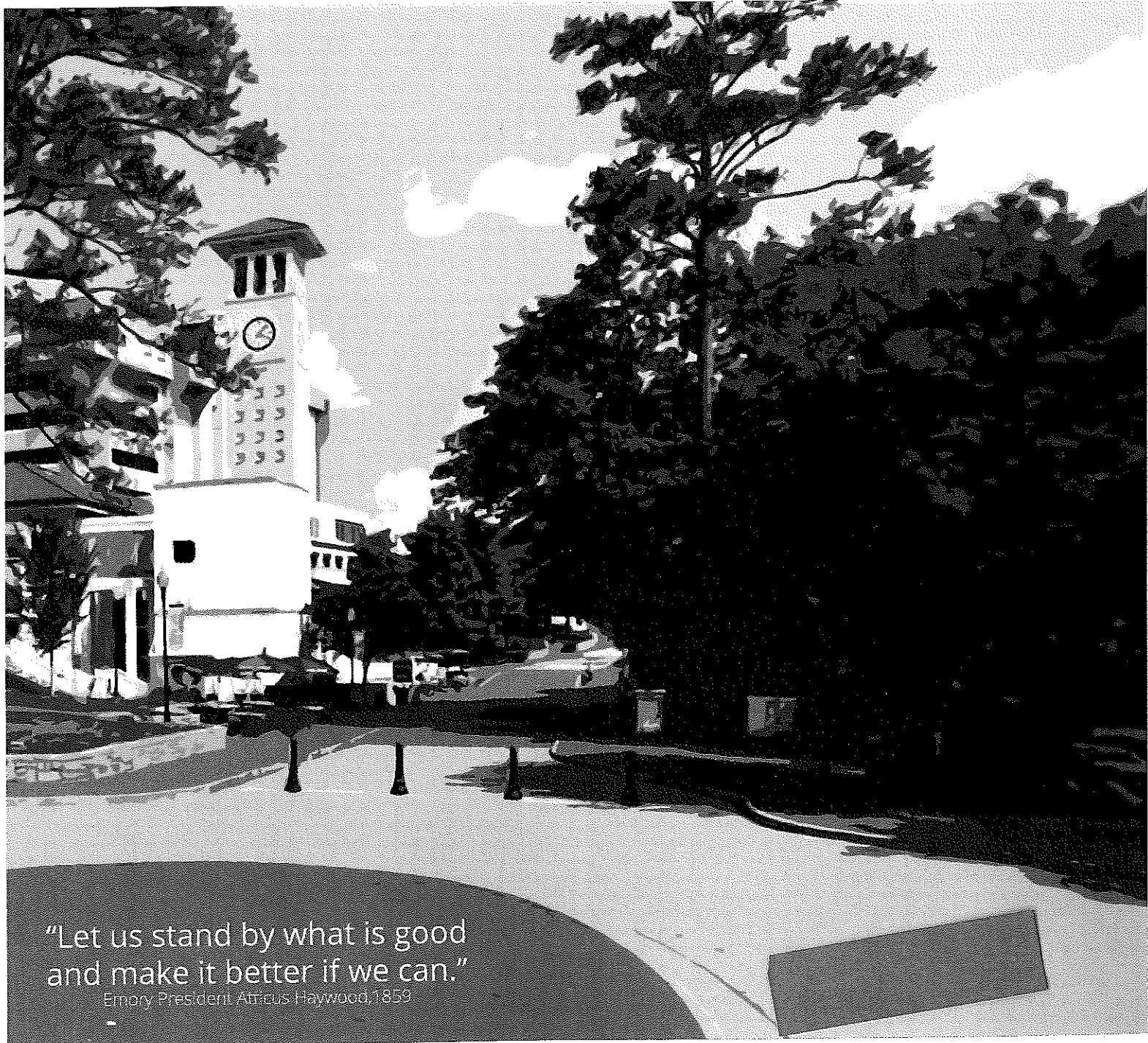
150-seat black box theater • Forbes Center for the Performing Arts • James Madison University • Harrisonburg, Va.

New Campus Life Center



EMORY
UNIVERSITY

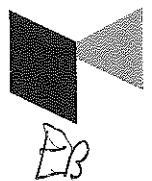
Theater?



"Let us stand by what is good
and make it better if we can."

Emory President Atticus Haywood, 1859

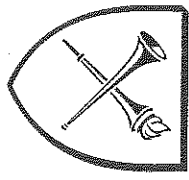
Statement of Qualifications
Mackey Mitchell Architects
October 22, 2014



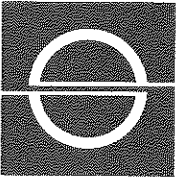
EM

Notes?

Campus Life Center

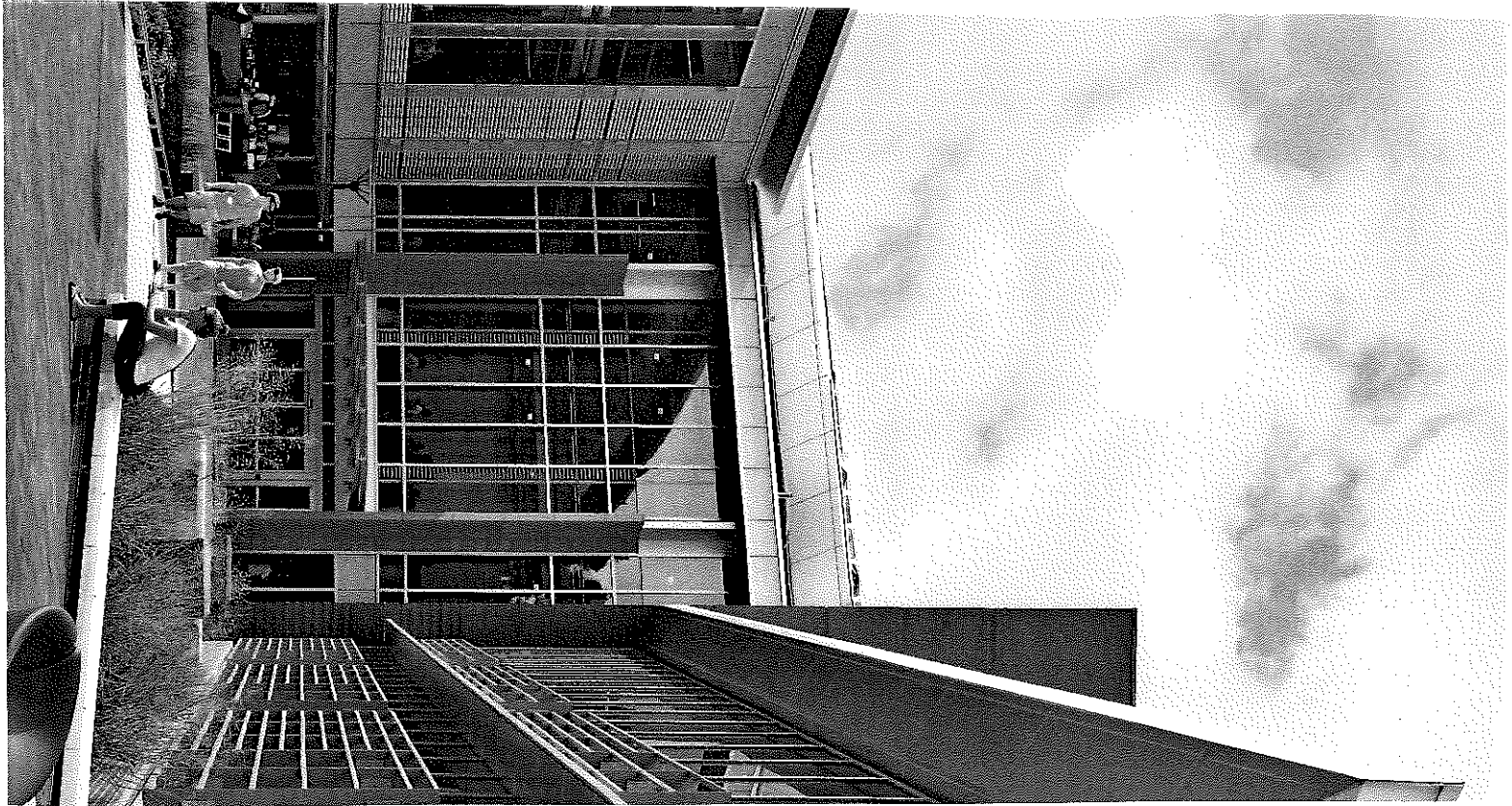


EMORY UNIVERSITY



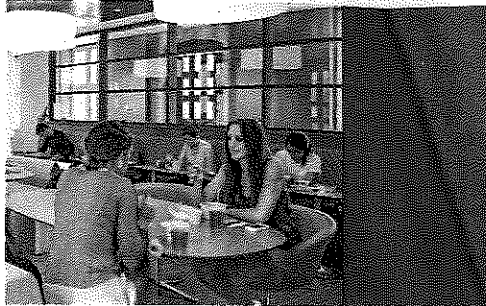
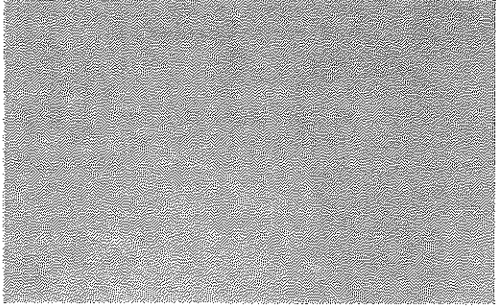
DUDA | PAINE
ARCHITECTS

REQUEST FOR QUALIFICATIONS
OCTOBER 23, 2014

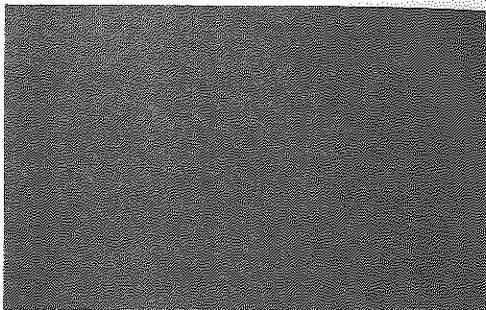




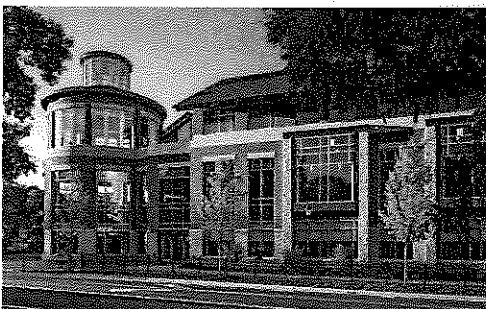
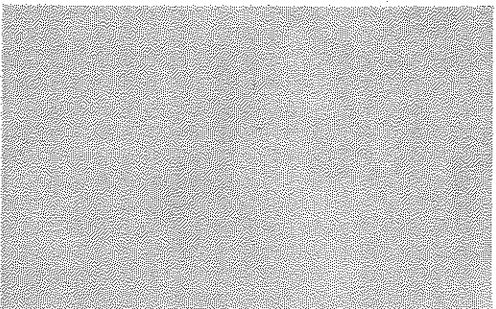
Firm Qualifications



EMORY
UNIVERSITY

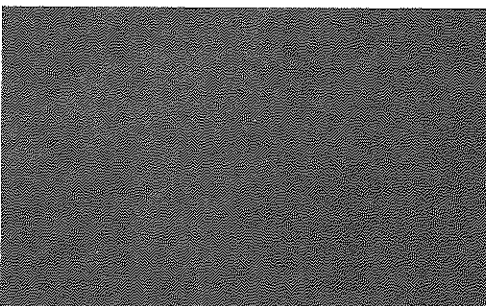
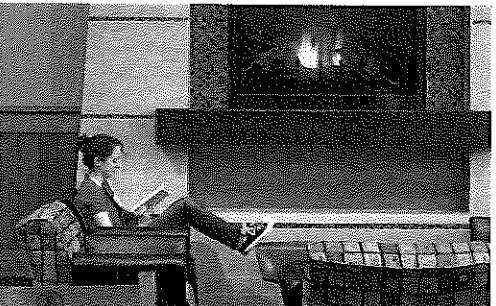


Programming & Architectural
Design Services for the
CAMPUS LIFE CENTER



prepared for
Jen Fabrick, AIA
University Architect, Campus Services

October 23, 2014



Architects and Planners

Bruner/Cott



Cambridge, Massachusetts
www.brunercott.com

BRIDGE ELEMENT
 • Creates Framed View at Axis End

McDONOUGH FIELD /
 THEATRE / EVENT MARQUIS

THEATRE IN THE PARK
 • Black Box Opens to Grass Amphitheatre

COMMONS TOWER
 • Announces Entry to Commons

**FOOD TRUCK
 MARKETPLACE**

**RETAIL
 STREET**

• Combines Emory
 Run Venues w/ Private
 Retail Leases. Large
 Student Activity Groups

**OPEN-AIR
 MARKET**

• Supports Farm & Food
 Market Truck

THE INCUBATOR

• Living / Learning
 Classrooms and Student Orgs
 and Activities

ALABAMA HALL

WOODRUFF HALL

MEANS DRIVE